

ISRIC
P.O. Box 353
6700 AJ Wageningen
The Netherlands

LEGEND

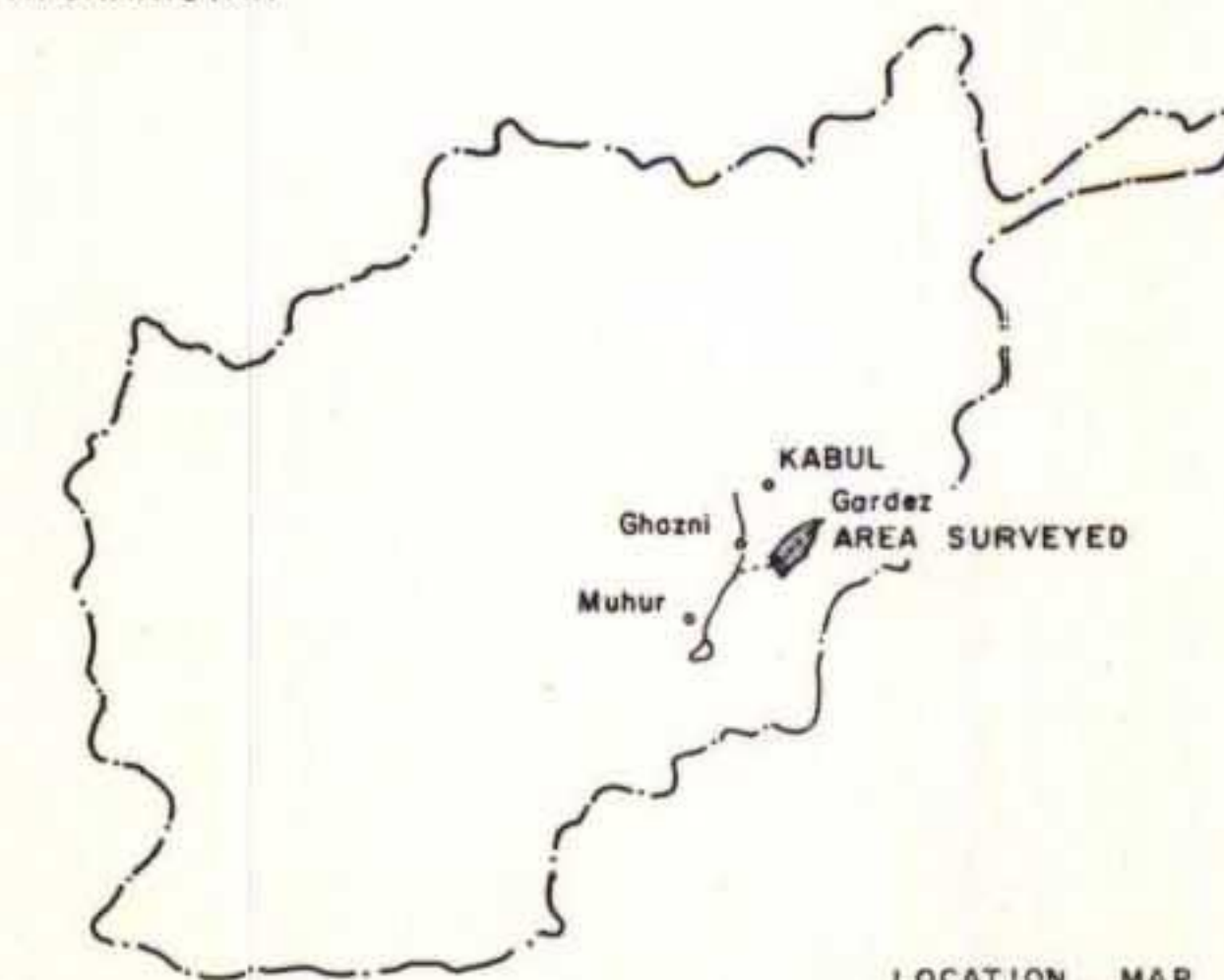
- 1 BROWN DESERT SOIL SANDY LOAM TO LOAM, COLLUVIAL.
1.1 THE SAME AS 1 BUT SILTY LOAM TO CLAYLOAM.
1.2 THE SAME AS 1 BUT WITH A PRONOUNCED DARK GREY BROWN AGRO-IRRIGATION HORIZON.
1.3 LOAMY SAND TO SANDY LOAM, STRONGLY ERODED & SALINE.
2 HYDROMORPHIC DARK GREY BROWN LOAM TO SILTY SANDY LOAM, NON-SALINE.
2.1 THE SAME AS 2 BUT SALINE.
3 REDDISH BROWN DESERT SOIL COARSE SANDY LOAM TO SAND UNDERLAIN BY GRAVEL AT 20-30 Cms. COLLUVIAL.
3.1 THE SAME AS 3 BUT STRONGLY ERODED & GRAVELY.
4 SOLONCHAK, SANDY LOAM TO LIGHT LOAM, ALLUVIAL.
5 CONSOLIDATED SANDS.
5.1 DUNES.
□ PROFILE OF PHYSICAL PROPERTIES.

LEGEND

- JEEP TRACK
TRAIL
RIVER
SAND
DRAINAGE
CANAL
KAREZ
VILLAGE
HILLY TERRAIN
CULTIVATED AREA



AFGHANISTAN



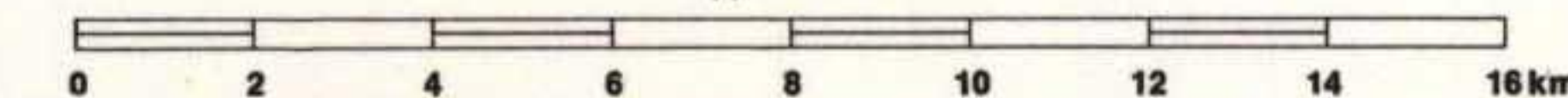
LOCATION MAP

AFGHANISTAN & UNITED NATIONS SPECIAL FUND
LAND & WATER RESOURCES SURVEY

FOOD AND AGRICULTURE ORGANIZATION OF THE UNITED NATIONS

SOIL MAP THE JILGA VALLEY

Approx. Scale



Surveyed Dec. 1962

Drawing No. Vol. IV-13

Compiled from uncontrolled Air Photographs