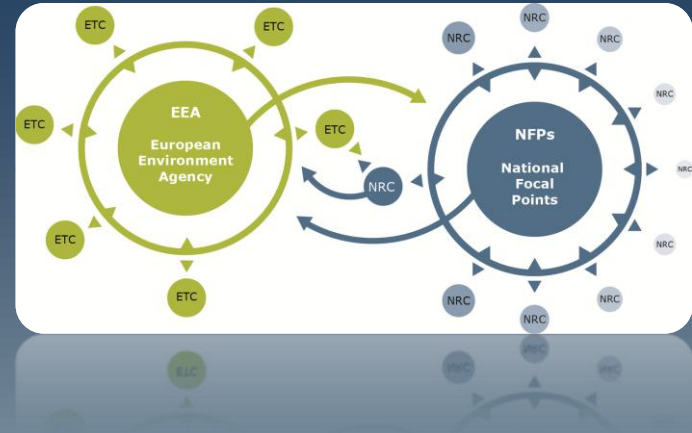


EIONET – NRC SOIL

Ispra, ITALY – 23 May 2014



Soil in EEA's Multi-annual work programme (MAWP) 2014-2018

Geertrui Louwagie

Ecosystems assessment group – Natural systems and vulnerability programme



- To be the prime source of knowledge at European level informing the implementation of European and national environment and climate policies
- To be a leading knowledge centre on the knowledge needed to support long term transition challenges and objectives
- To be the lead organisation at European level facilitating knowledge-sharing and capacity -building in the field of environment and climate change



EEA Strategic response

Informing policy implementation



Assessing systemic challenges



Dynamic interactions

Knowledge creation, sharing and use



EEA Multi-annual work programme (MAWP) 2014-2018

... *strategic areas (SAs)*

- SA1 - Informing policy implementation
 - SA2 - Assessing systemic challenges
 - SA3 - Knowledge co-creation, sharing and use
 - SA4 - EEA management
-
- Strengthening the integration of EEA and Eionet activities, including capacity building, remain central to the 2014-18 strategy
 - Deepening of Eionet following the principles of SEIS



SA1: INFORMING POLICY IMPLEMENTATION



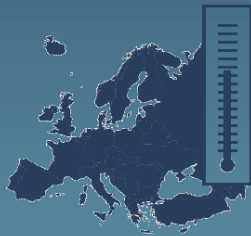
**AIR POLLUTION,
TRANSPORT AND NOISE**



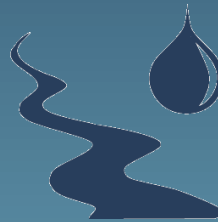
**INDUSTRIAL
POLLUTION**



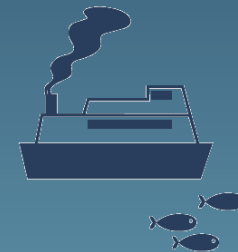
**CLIMATE CHANGE
MITIGATION AND ENERGY**



**CLIMATE CHANGE
IMPACTS, VULNERABILITY
AND ADAPTATION**



**WATER MANAGEMENT,
RESOURCES AND
ECOSYSTEMS**



**MARINE AND
MARITIME, FISHERIES
AND COASTAL**



**BIODIVERSITY,
ECOSYSTEMS, AGRICULTURE
AND FORESTS**



**URBAN, LAND USE
AND SOIL**



**WASTE AND MATERIAL
RESOURCES**



SA1.8: Urban, land use and soil

... *Multi-annual objective*



**URBAN, LAND USE
AND SOIL**

To support and inform
policy development and implementation

in the area of urban, land use and soil

by means of data, information and assessments



SA1.8: Urban, land use and soil ... *expected outputs 2014-2018*



URBAN, LAND USE AND SOIL

- European integrated data platform for spatial and thematic assessments (2014-18)
- Assessments of resource efficiency in relation to land take, land recycling, and virtual land use in Europe and third countries, supplemented by direct assessment of imperviousness (soil sealing) change (2015-2016)
- Integrated land assessments based on land multi-functionality concepts to support planned land use and soil policy targets; maintain and develop related map-based indicators. This will contribute to ecosystems mapping and assessments (2014-2015)
- Evaluation of the direct and indirect impact of EU policies on land and soil use in the EU and globally (2015-2018)



SA1.8: Urban, land use and soil

... *expected outputs 2014-2018 (continued)*



URBAN, LAND USE AND SOIL

- Assessments of green infrastructure (GI) and other alternatives to 'grey' infrastructure focusing on the multiple functions, benefits, and services that GI can provide (2017 EU progress report on Green Infrastructure Strategy) (2014-2017)
- Indicators and assessments of urban areas and sustainable cities, integrating environmental and socio-economic information, and addressing the resource efficiency targets (2014-2015)
- Datasets and indicators to track sustainability trends, and the environmental and territorial impacts of land use-dependent economic sectors (agriculture, forest management, tourism) (2014-2018)
- Eionet workshops and similar (annual/regular)





1.8.1 Integrated data platform

1.8.2 Land and soil related resource efficiency

1.8.3 Urban systems and territorial analysis

1.8.4 Ecosystems mapping and assessment

1.8.5 ETC management

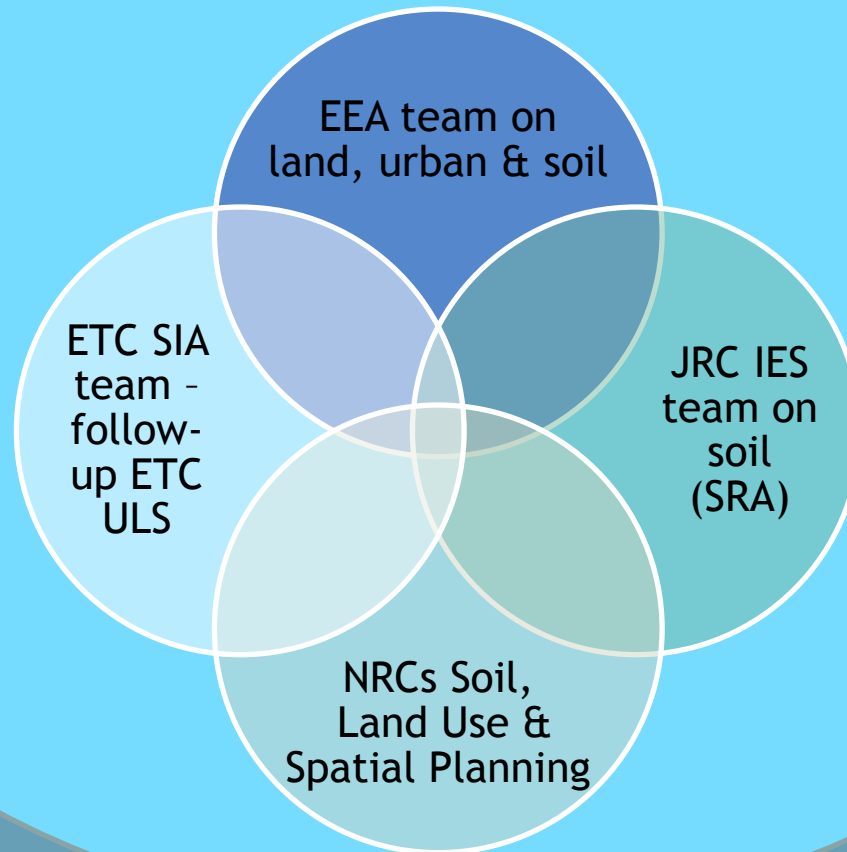


SA1.8: Urban, land use and soil ... *expected outputs 2014-2018 (continued)*



**URBAN, LAND USE
AND SOIL**

Soil-related topics for Eionet



European Topic Centre on Urban, Land use and Soil ... *work packages (WPs)*



**URBAN, LAND USE
AND SOIL**

To assist EEA in

- WP1: Urban areas and sustainable cities
- **WP2: Land and soil-related resource efficiency**
- WP3: Territorial analysis and regional information
- WP4: ETC management and capacity-building



European Topic Centre on Urban, Land use and Soil

... land and soil resource efficiency



**URBAN, LAND USE
AND SOIL**

- **Maintain data centre land use - liaise with JRC' ESDAC & EFDAC**
- Maximise the use of existing data (e.g. Copernicus, Lucas) and spatial modelling techniques (e.g. from JRC) to support analysis of land use
- **Assess pressures on land and soil from resource efficiency and ecosystem perspectives**
- Improve knowledge about land and soil stocks in Europe, including quantitative and qualitative analyses of Europe's land cover, land use and soil functions
- **Provide land and soil-related inputs to work on green infrastructure and biophysical mapping of ecosystems and their services**



European Topic Centre on Urban, Land use and Soil

... land and soil resource efficiency

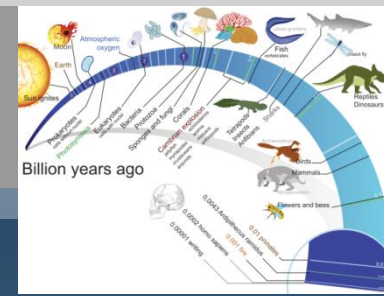


**URBAN, LAND USE
AND SOIL**

- Further develop and update EEA indicators, including on land take, imperviousness and landscape fragmentation
- Assist further development of integrated land and soil assessment for Europe, including environmental accounting, e.g. by including additional analytical dimensions to land accounts
- Support EEA in potential outcome of upcoming Land Communication, e.g. by providing information relevant to proposed land/soil targets
- Support EEA and actively participate in relevant EIONET NRCs



European Topic Centre on Land, Urban and Soil ... *the timeline*



- 31 Mar 2014 - Deadline for submitting proposals
- 7 May 2014 - Evaluation of proposals
- 18 Jun 2014: EEA Management Board - Successful tenderer will be proposed for approval
- Sep 2014: Successful consortium to be designated
- Jan 2015 - New ETC ULS activities to start

Questions

European Environment Agency

Thank you!



geertrui.louwagie@eea.europa.eu

<http://www.eea.europa.eu>

