

# Soil Atlas of Africa

Kick-off meeting, 7-8 November 2007, JRC, Ispra, Italy

## Availability of materials in West/Central Africa

**Dr Martin Yemefack, PhD**

Vice-president of ASSS

Senior researcher at the IRAD, Yaoundé Cameroon

**Dr Robert Zougmore**

SG ASSS

# Introduction

---

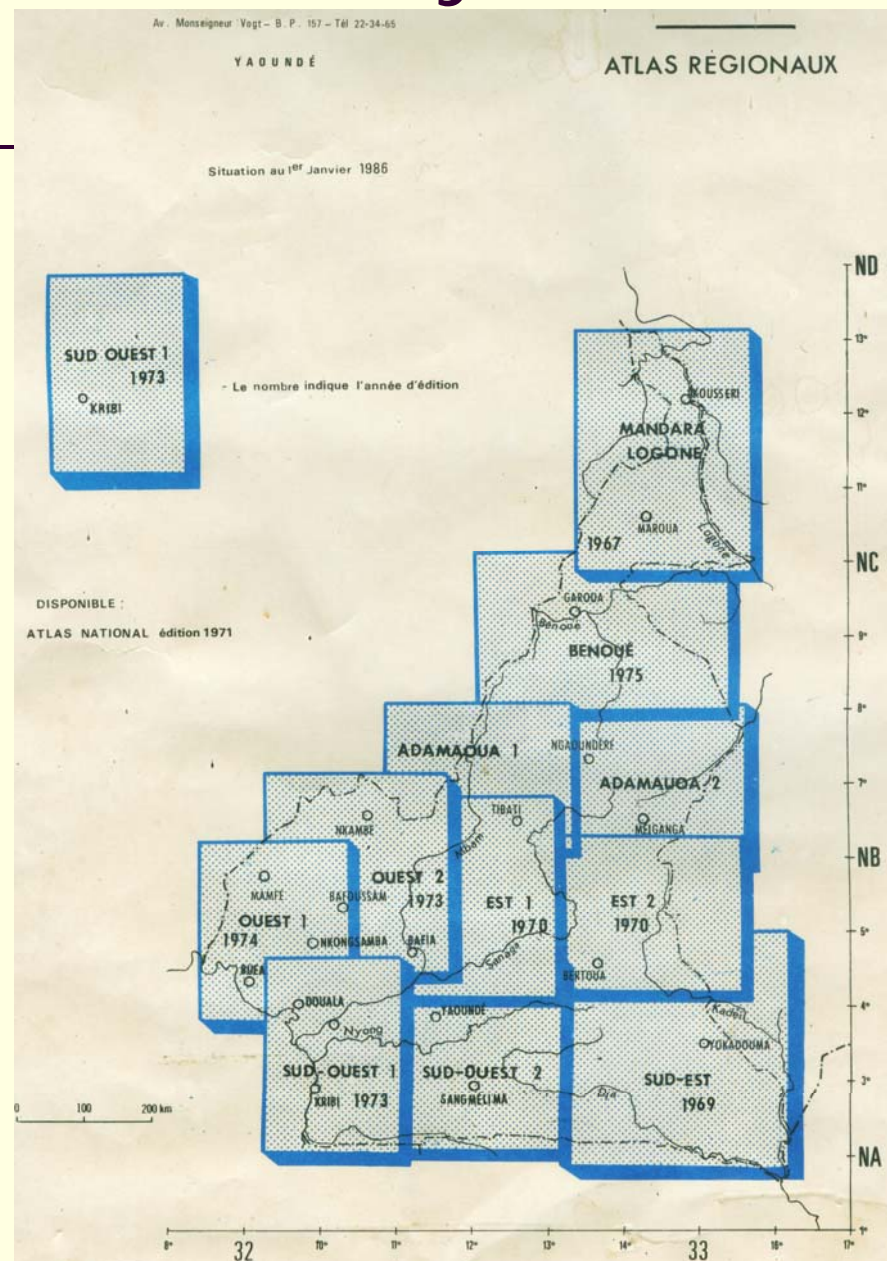
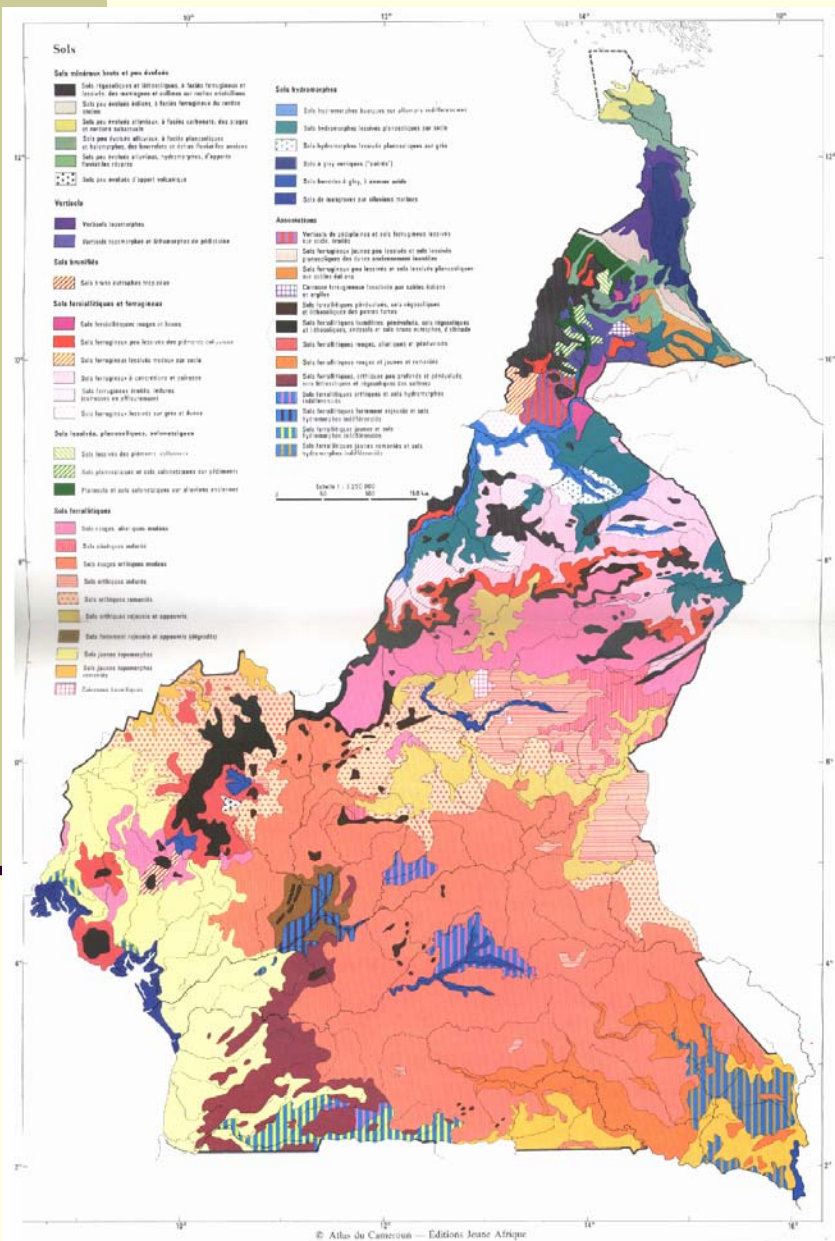
- Deep appreciation for the initiative of Soil Atlas of Africa. For us African soil scientist, the initiative is utmost welcome.
- As presented by Dr Zougmore, the SG of ASSS, we strongly support the project.
- We from the ASSS, will do all our best to involve and encourage our colleague in each subregion, and country by country.
- That is feasible at our level.

# Materials availability

---

- In West and Central Africa, two generations of soil maps are available:
  1. Maps issued during the colonial period or just after the independencies.
    - broader scale: 1:1000 000 to 1:2500 000
    - scale varying depending on the size of the country
    - they are available for all the countries
    - In Cameroon, regional Atlas were issued in 11 sheets at 1:500 000
    - all these maps are available mostly in hardcopy format
    - they can be found more certainly in three european counties:
      - Belgium (for RD Congo, Rwanda, Burundi)
      - France (IRD) for other French speaking countries
      - UK for English speaking countries

# Materials availability



# Materials availability

---

2. Maps issued most recently are not available in all the countries of west and central Africa.

- scales are variable from one country to another, but more detailed than the previous maps

- Ghana, Nigeria, Rwanda, etc. have done better

- Most of these maps are of digital format

- For Cameroon, 11 sheets of 1:500 000 soils map made but not yet published (See Pr Van Ranst)

# Materials availability

---

- The maps were made using either the USDA soil Taxonomy, the French soil classification system or National soil classification systems.
- Since the WRB system was developed taking into account most diagnostic properties and materials from other classification systems, I believe the translate of map unit into the WRB system will not greater deal.



Thank You for your

kind attention