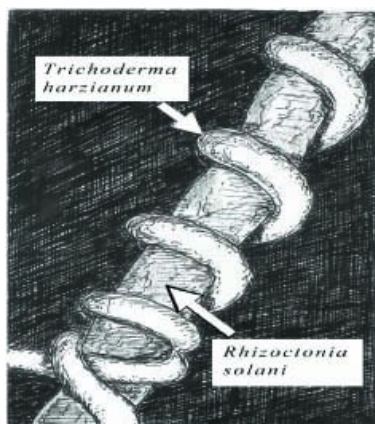




SOIL BIODIVERSITY AND PEST CONTROL

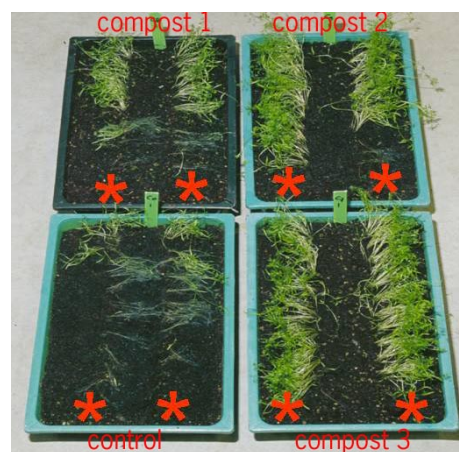
Crops are threatened by soil-borne disease, that can cause severe yield decrease and economic damage



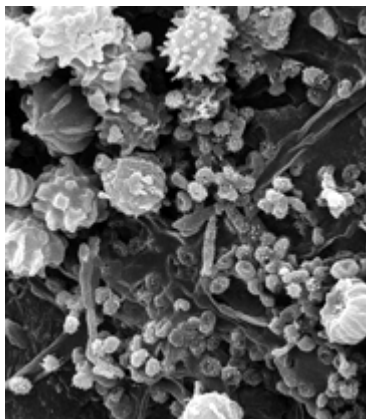
Soil has the potential to limit the effect of soil-borne diseases. This suppressiveness is a major component of soil health.

From ATTRA: National Sustainable Agriculture Information Service

Suppressive soils can be defined as soils in which the severity of a disease or incidence remains low, in spite of the presence of a pathogen, a susceptible host plant and climatic conditions favourable for disease development.



From Wageningen University



From CSIRO

There is some evidence to suggest that soil biodiversity confers disease suppressiveness.