



**EUROPEAN COMMISSION**  
DIRECTORATE-GENERAL  
**Joint Research Centre**



**ISPRA**  
Istituto Superiore per la Protezione  
e la Ricerca Ambientale

# **IFFI LANDSLIDE INVENTORY AND SUSCEPTIBILITY MAP AT NATIONAL SCALE**

**Alessandro Trigila, Carla Iadanza & Daniele Spizzichino**

**Experts meeting on harmonised landslide susceptibility mapping for Europe  
JRC, Ispra 26-27 May 2010**

# LANDSLIDE SUSCEPTIBILITY MAP AT NATIONAL SCALE

## ● Objectives:

- Implementation of susceptibility models (Statistical methods, Neural Networks)
- Landslide susceptibility map at national scale (1:1,000,000)

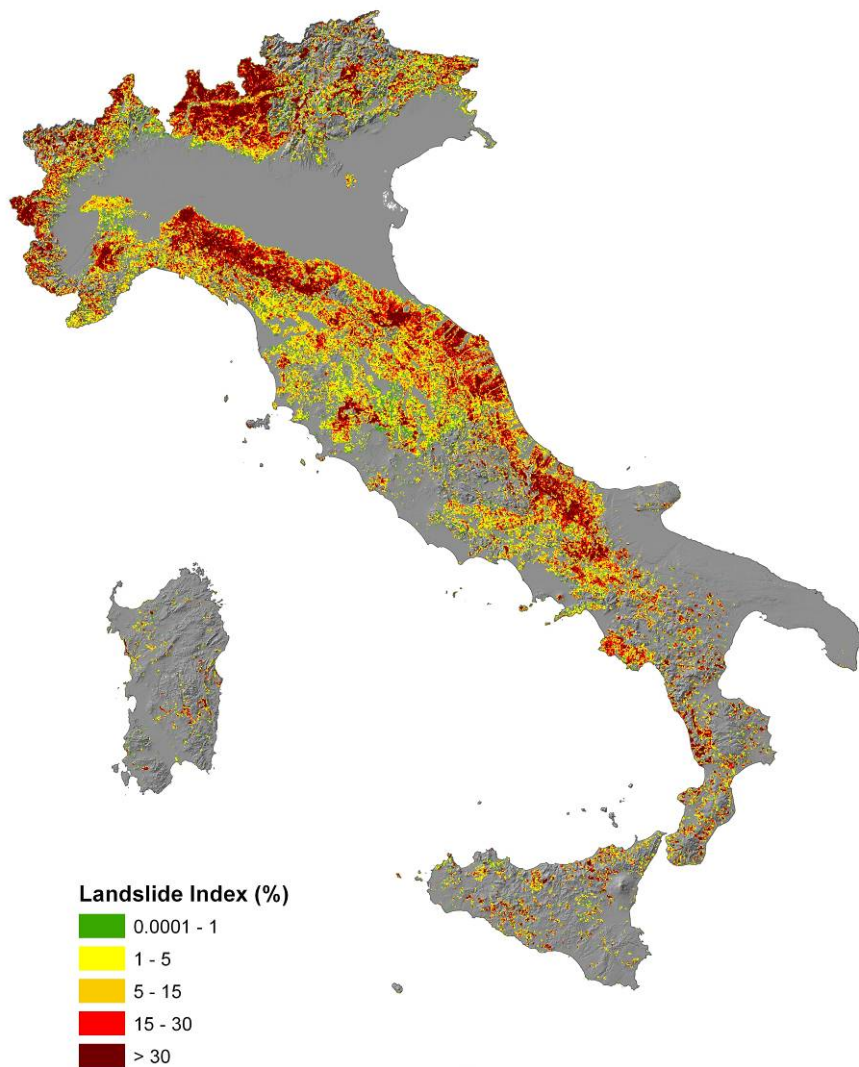
## ● Partners:

- ISPRA
- University of Milano-Bicocca
- University of Florence
- University of Rome “La Sapienza”

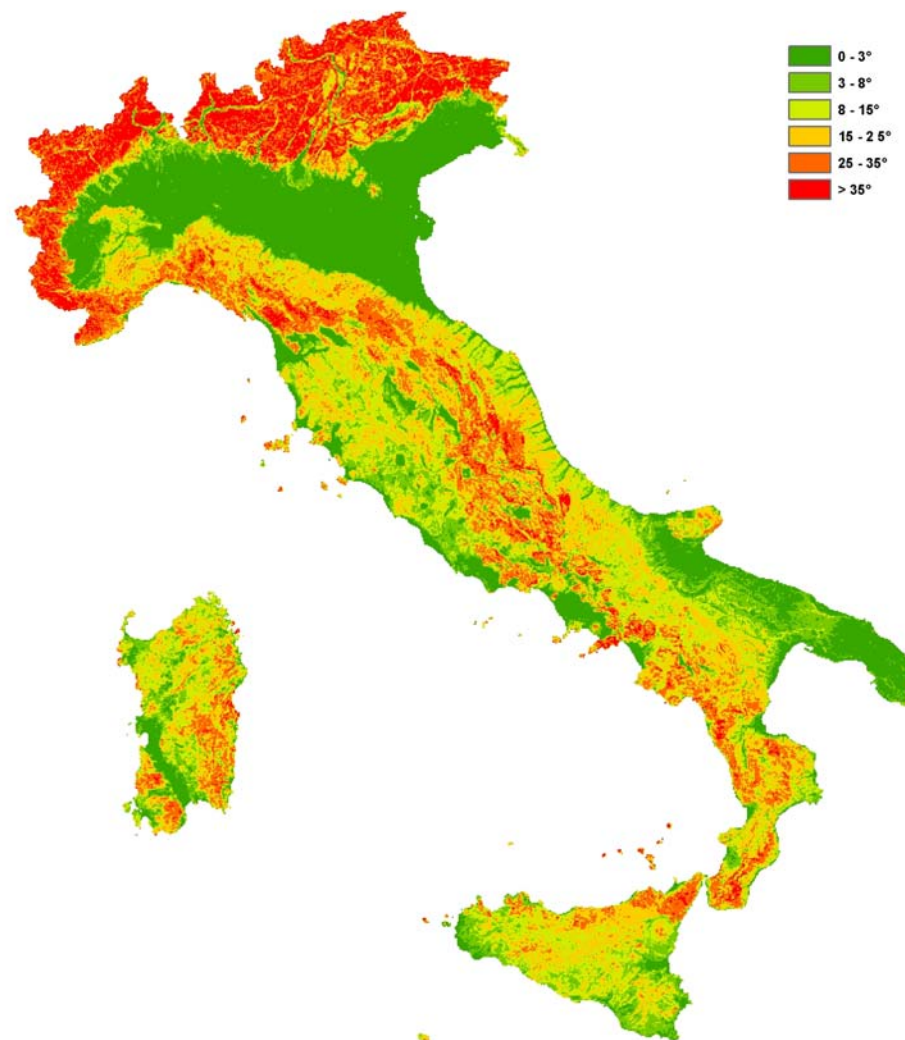
**Start date:** April 2010

**End date:** April 2011

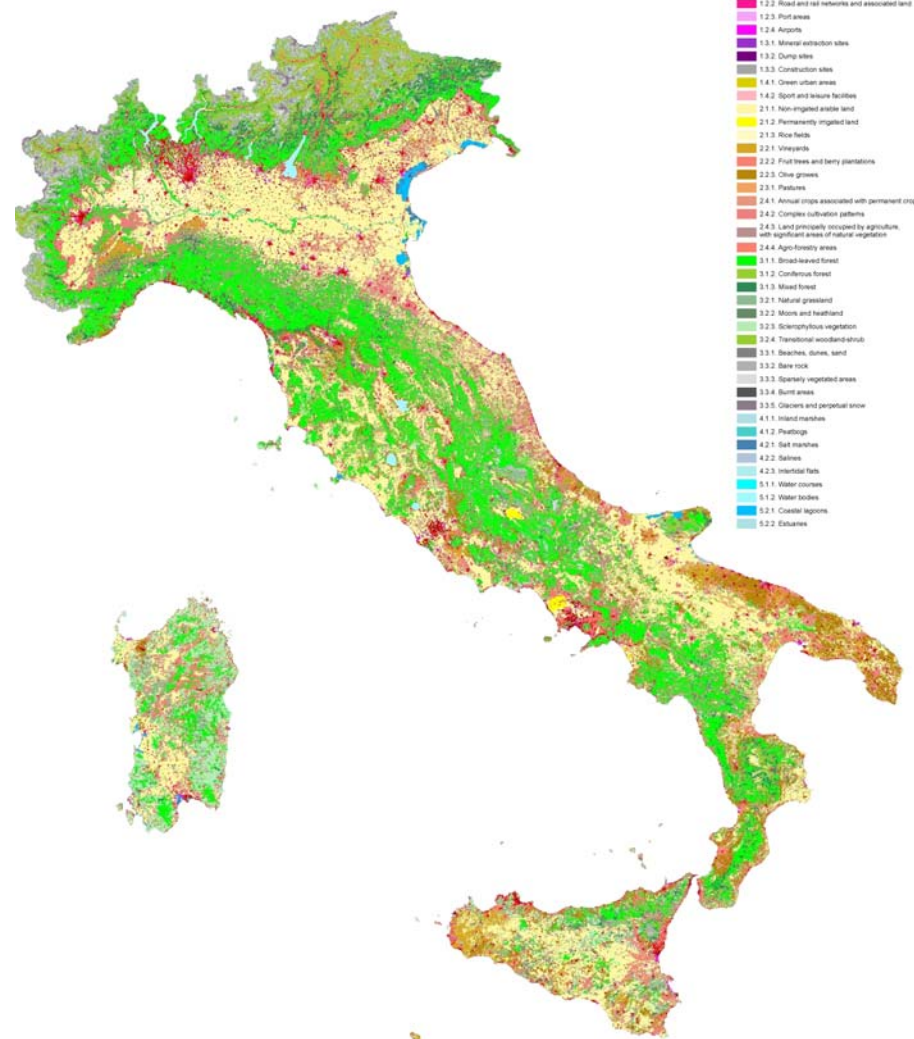
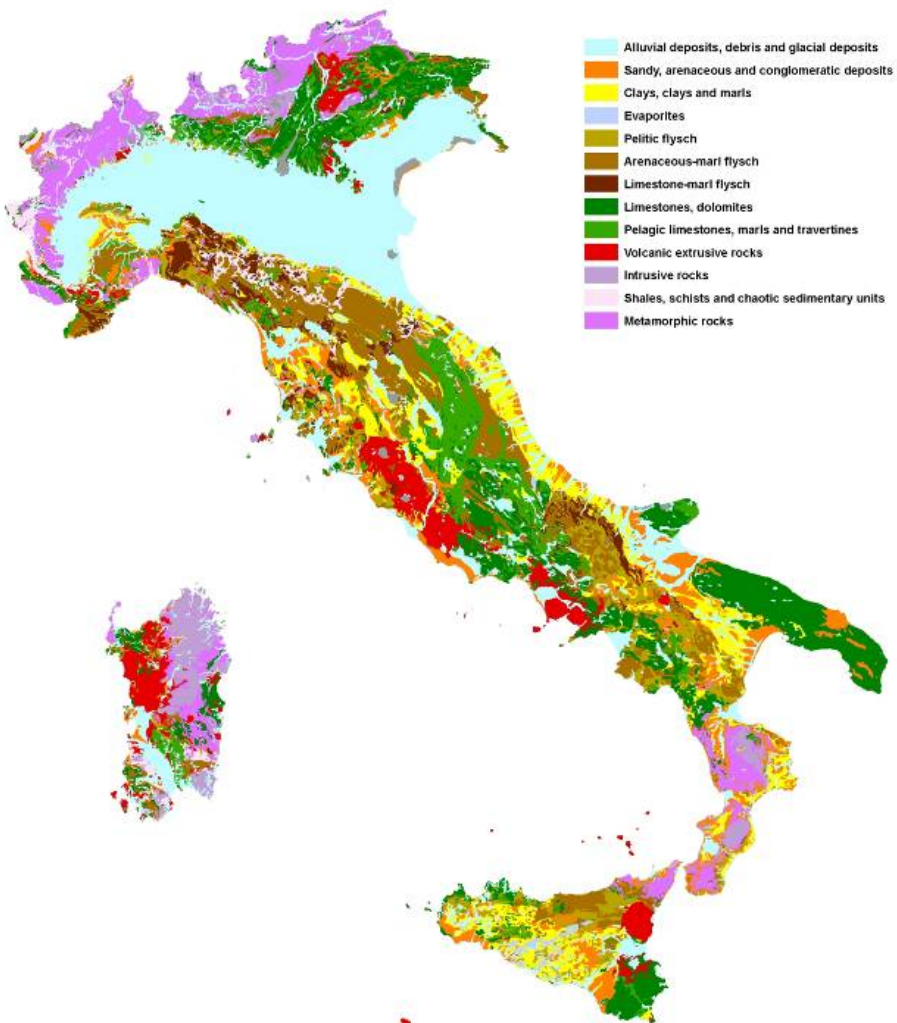
# INPUT DATA



**More than 485,000 landslides which affect an area of 20,700 km<sup>2</sup> (6.9% of Italy).**



**Slope angle derived from a 20x20 m resolution DTM**



**Lithological map derived from existing Geological Map at 1:500,000 scale (Italian Geological Survey) by grouping the 128 geological units into 13 lithological units.**

**Corine Land Cover 2000**