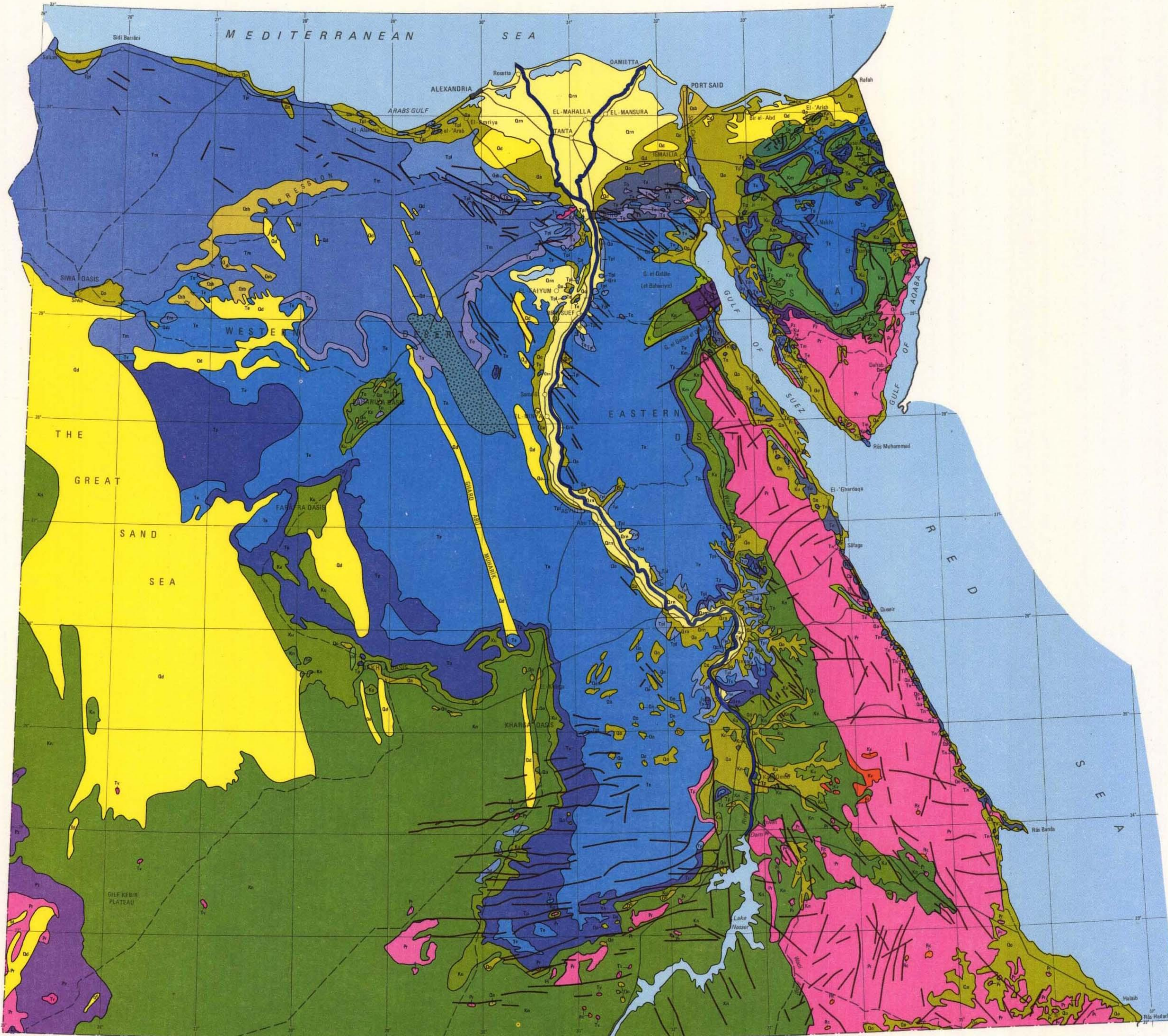


# GEOLOGICAL MAP OF EGYPT



- Legend**
- QUATERNARY**
    - Qrn Recent Nile alluvium
    - Qd Qsb Superficial deposits. Qd: sand dunes, Qsb: sabkha
    - Qo Other Quaternary formations
  - TERTIARY**
    - T Undifferentiated, mainly Eocene and Miocene in the Sinai; Paleocene and Eocene in the Eastern Desert
    - Tn Neogene, undifferentiated
    - Tpl Pliocene: Marine sediments along the Red Sea and Mediterranean coast and in the Nile Valley; fresh water and spring deposits of the Nile Valley and Western Desert oases, and non-marine scree deposits outside the Nile Valley
    - Tm Miocene
    - Tv Extrusive rocks, mostly of Tertiary age
    - Ol Oligocene - Lower Miocene, gravels and sands
    - Te Oligocene: sands and gravels of Gebel Ahmar, Qatrani formation
    - Et Eocene
    - Ep Paleocene
    - Rc Ring complexes
    - Kv Wadi Natash Volcanics
  - CENO-ZOIC**
  - MESO-ZOIC**
    - CRETACEOUS**
      - K Undifferentiated
      - Ku Upper Cretaceous
      - Km Middle Cretaceous
      - Kn Nubia Sandstone 'Complex'
    - JURASSIC**
      - Jr Undifferentiated
    - TRIASSIC**
      - Tr Undifferentiated
  - PALEO-ZOIC**
    - CARBONIFEROUS**
      - C Undifferentiated
    - POST- AND PRE-CARBONIFEROUS**
      - Pc Undifferentiated
  - PRECAMBRIAN**
    - Pf Mainly igneous and metamorphic rocks with volcanics and metavolcanics
- Fault line

- Wadi
- International boundary
- Water
- Paved road
- Track

