

Derived from Gemini orbital photograph 66-HC-1759
I.T.C. Publication B 61

Cartography: H.P. Krugne
Printed by I.T.C.

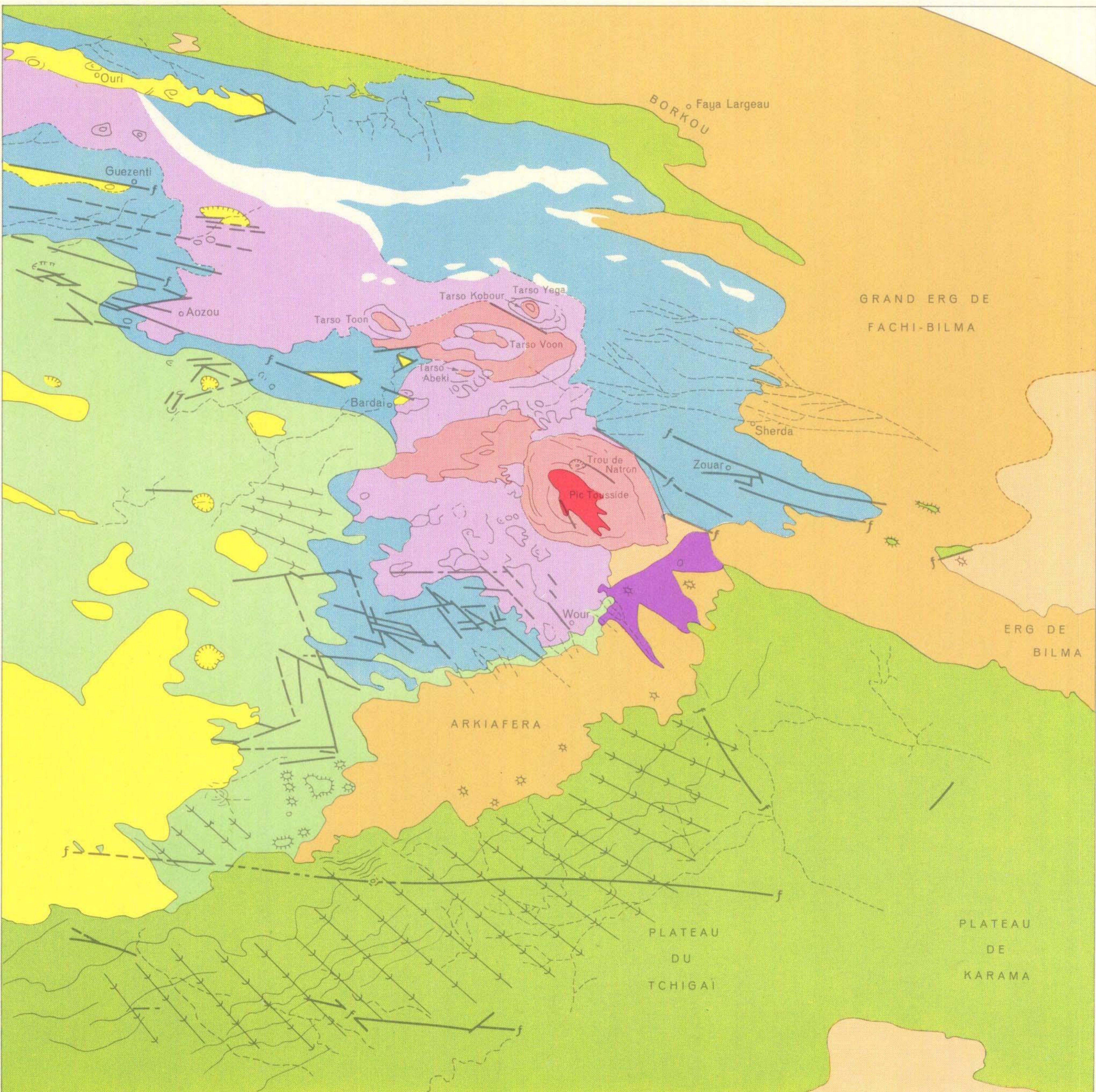
GEOMORPHOLOGICAL SPACE MAP of the LIBYAN DESERT - TIBESTI MOUNTAINS

by: R.A. van Zuidam

LEGEND

- 1 sand desert with longitudinal dunes
- 2 sand desert with transverse dunes
- 3 sand desert with a mixed dune formation
- 4 sand- and gravel desert
- 5 pediment with a thick sand and gravel cover
- 6 pediment with thin sand and gravel cover
- 7 pediment
- 8 cuesta landscape
- 9 cuesta landscape, dissected by longitudinal mega-grooves
- 10 landscape, dissected by longitudinal mega-grooves
- 11 landscape, dissected by windwork and tectonic activity
- 12 sandstone plateau
- 13 sandstone plateau, severely fractured
- 14 plateau of old black formations
- 15 volcano/lavaflow of recent black formations
- 16 plateau/caldera of old light-toned formations
- 17 volcanic debris
- 18 coastal mountain zone
- 19 mediterranean sea
- 20 volcano
- 21 outlier
- 22 depression of unknown origin
- 23 faultline
- 24 fractures
- 25 limit of geomorphological unit, certain, conjectural
- 26 limit of dune system
- 27 lines of outcrop
- 28 mega-groove, generalized

Map 1.



Derived from Gemini orbital photograph 66-HC-989
I.T.C. - Publication B 61

Cartography: H.P. Krugne
Printed by I.T.C.

GEOMORPHOLOGICAL SPACE MAP of the NORTHWESTERN TIBESTI MOUNTAINS

by: R.A. van Zuidam

LEGEND

- 1 sand and gravel desert
- 2 pediment with thick sand and gravel cover
- 3 pediment with thin sand and gravel cover
- 4 cuesta landscape severely dissected by longitudinal mega-grooves
- 5 landscape, dissected by longitudinal mega-grooves
- 6 sandstone plateau, severely fractured
- 7 plateau of old black formations
- 8 volcano/lavaflow of recent black formations
- 9 plateau and caldera of old light-toned formations
- 10 volcanic debris
- 11 volcano
- 12 depression of unknown origin
- 13 outlier
- 14 faultline
- 15 fractures
- 16 limit of geomorphological unit, certain, conjectural
- 17 lines of outcrop
- 18 drainage
- 19 mega-grooves, generalized

Map 2.