

VEGETATION OF THE TUGELA BASIN, NATAL

By Denzil Edwards

Base map: South Africa 1:250,000 Topo-cadastral Series (1959)

A. COAST VEGETATION.

- 1 Coast *Acacia karroo*-*A. nilotica*-*A. robusta* Thorn Scrub
- 2 Semi-Coast Bush Clump-Grassland Mosaic
- 3 Semi-coast Secondary *Aristida junciformis* Grassland
- 4 Semi-coast Forest

B. VALLEY VEGETATION

- 5 *Spirostachys-Acacia burkei* Woodland
- 6 *Spirostachys* Valley Woodland
- 7 *Euphorbia tirucalli* Succulent Scrub
- 8 *Combretum apiculatum* Tree Veld
- 9 Semi-deciduous Bush (*Acacia-Boscia-Olea-Schotia* Scrub)
- 10 *Sclerocarya-Acacia* Tree Veld
- 11 Dry Coast *Acacia karroo*-*A. nilotica* Thorn Veld
- 12 Interior *Acacia karroo*-*A. nilotica* Thorn Veld

C. INTERIOR BASINS VEGETATION

- 13 *Themeda-Hyparrhenia* Grassland
- 14 Moist Transitional *Themeda-Hyparrhenia* Grassland
- 15 *Tristachya-Digitaria* Grassland
- 16 Transitional *Tristachya-Digitaria* Grassland

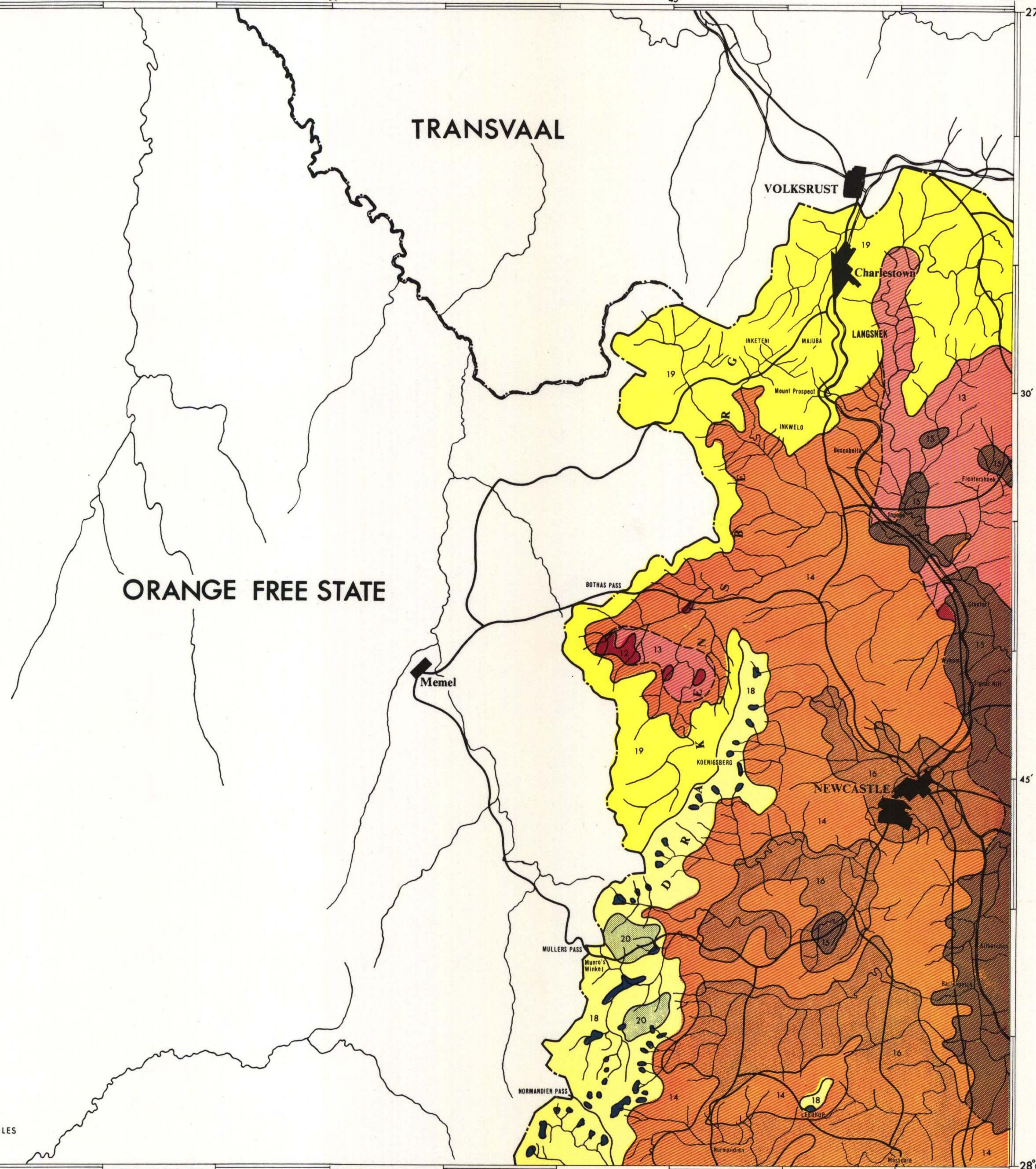
D. UPLANDS VEGETATION

- 17 Mistbelt Secondary *Aristida junciformis* Grassland
- 18 *Themeda-Trachypogon* Highlands Grassland
- 19 *Themeda-Tristachya-Digitaria* Northern Highlands Grassland
- 20 *Protea* Savanna
- 21 Mistbelt Mixed *Podocarpus* Forest
- 22 Mountain *Podocarpus* Forest

E. MOUNTAIN VEGETATION

- 23 Subalpine Fynbos and Grassland
- 24 Alpine Fynbos and Grassland

SCALE 1:250,000



28°00' 28°45' 29°00' 15' 30' 45' 30°00' 27°15'