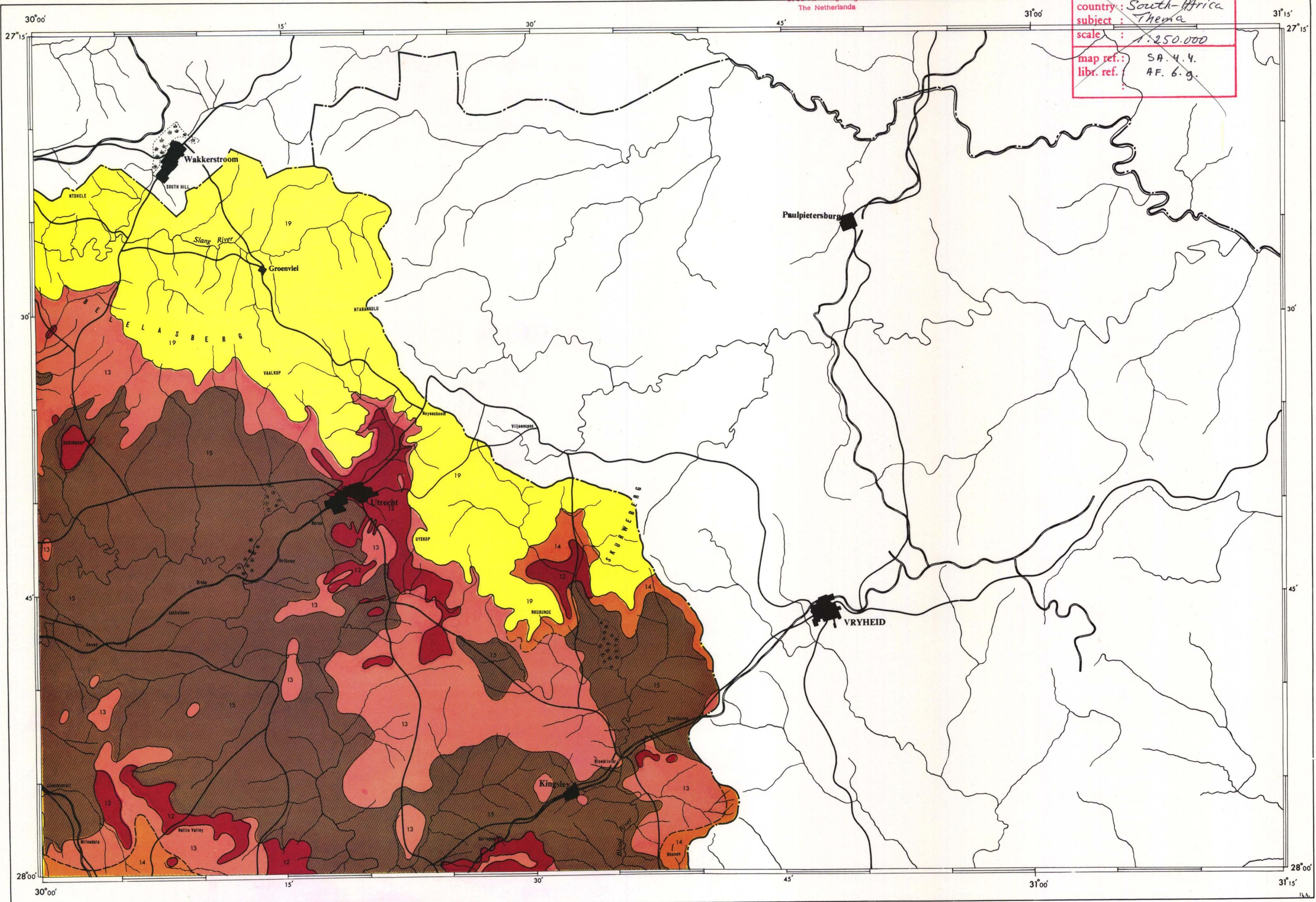
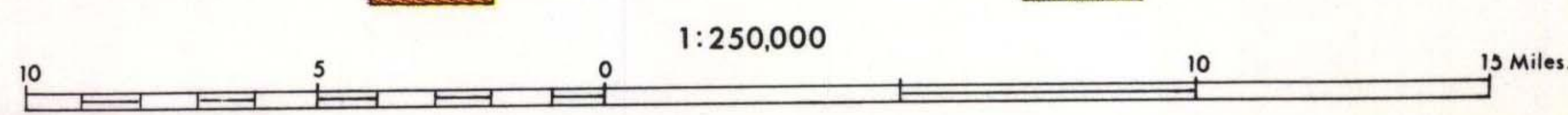


country: *South-Africa*
 subject: *Thema*
 scale: *1:250.000*
 map ref.: SA. 4. 4.
 libr. ref.: AF. 6. g.



- | | | | | | | | | | |
|-----------------------------|---|------------------------------|--|---------------------------------------|--|-------------------------------|---|--------------------------------|--|
| A. COAST VEGETATION. | | B. VALLEY VEGETATION. | | C. INTERIOR BASINS VEGETATION. | | D. UPLANDS VEGETATION. | | E. MOUNTAIN VEGETATION. | |
| 1 | Coast <i>Acacia karroo-A. nilotica-A. robusta</i> Thorn Scrub | 5 | <i>Spirostachys-Acacia burkei</i> Woodland | 9 | Semi-deciduous Bush (<i>Acacia-Boscia-Olea-Schotia</i> Scrub) | 13 | <i>Themeda-Hyparrhenia</i> Grassland | 17 | Mistbelt Secondary <i>Aristida junciformis</i> Grassland |
| 2 | Semi-coast Bush Clump - Grassland Mosaic | 6 | <i>Spirostachys</i> Valley Woodland | 10 | <i>Sclerocarya-Acacia</i> Tree Veld | 14 | Moist Transitional <i>Themeda-Hyparrhenia</i> Grassland | 18 | <i>Themeda-Trachypogon</i> Highlands Grassland |
| 3 | Semi-coast Secondary <i>Aristida junciformis</i> Grassland | 7 | <i>Euphorbia tirucalli</i> Succulent Scrub | 11 | Dry Coast <i>Acacia karroo-A. nilotica</i> Thorn Veld | 15 | <i>Tristachya-Digitaria</i> Grassland | 19 | <i>Themeda-Tristachya-Digitaria</i> Northern Highlands Grassland |
| 4 | Semi-coast Forest | 8 | <i>Combretum apiculatum</i> Tree Veld | 12 | Interior <i>Acacia karroo-A. nilotica</i> Thorn Veld | 16 | Transitional <i>Tristachya-Digitaria</i> Grassland | 20 | Protea Savanna |
| | | | | | | | | 21 | Mistbelt Mixed <i>Podocarpus</i> Forest |
| | | | | | | | | 22 | Mountain <i>Podocarpus</i> Forest |
| | | | | | | | | 23 | Subalpine Fynbos and Grassland |
| | | | | | | | | 24 | Alpine Fynbos and Grassland |

VEGETATION OF THE TUGELA BASIN, NATAL by Denzil Edwards



Base Map: South Africa 1:250,000 Topocadastral Series (1959). Pietermaritzburg, 1963.