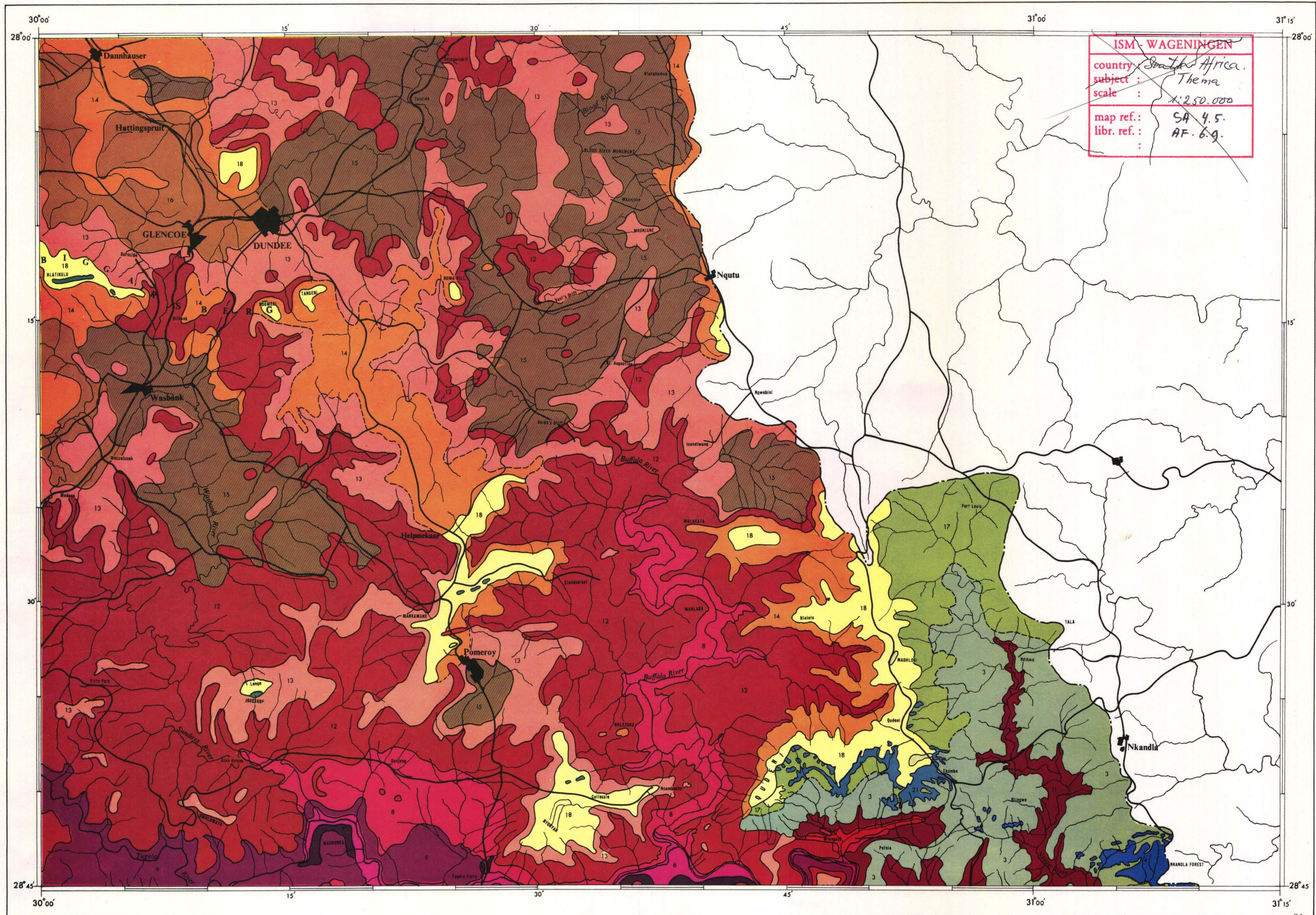


- | | | | | |
|--|--|---|---|--|
| A. COAST VEGETATION | B. VALLEY VEGETATION. | C. INTERIOR BASINS VEGETATION. | D. UPLANDS VEGETATION. | E. MOUNTAIN VEGETATION. |
| 1 Coast <i>Acacia karroo-A. nilotica-A. robusta</i> Thorn Scrub. | 5 <i>Spirostachys-Acacia burkei</i> Woodland | 9 Semi-deciduous Bush (<i>Acacia-Boscia-Olea-Schotia</i> Scrub). | 13 <i>Themeda-Hyparrhenia</i> Grassland | 17 Mistbelt Secondary <i>Aristida junciformis</i> Grassland |
| 2 Semi-coast Bush Clump Grassland Mosaic | 6 <i>Spirostachys</i> Valley Woodland | 10 <i>Sclerocarya-Acacia</i> Tree Veld | 14 Moist Transitional <i>Themeda-Hyparrhenia</i> Grassland. | 18 <i>Themeda-Trachypogon</i> Highlands Grassland. |
| 3 Semi-coast Secondary <i>Aristida junciformis</i> Grassland | 7 <i>Euphorbia tirucalli</i> Succulent Scrub | 11 Dry Coast <i>Acacia karroo-A. nilotica</i> Thorn Veld. | 15 <i>Tristachya-Digitaria</i> Grassland | 19 <i>Themeda-Tristachya-Digitaria</i> Northern Highlands Grassland. |
| 4 Semi-coast Forest | 8 <i>Combretum apiculatum</i> Tree Veld | 12 Interior <i>Acacia karroo-A. nilotica</i> Thorn Veld. | 16 Transitional <i>Tristachya-Digitaria</i> Grassland. | 20 Protea Savanna |
| | | | | 21 Mistbelt Mixed <i>Podocarpus</i> Forest |
| | | | | 22 Mountain <i>Podocarpus</i> Forest. |
| | | | | 23 Subalpine Fynbos and Grassland |
| | | | | 24 Alpine Fynbos and Grassland. |

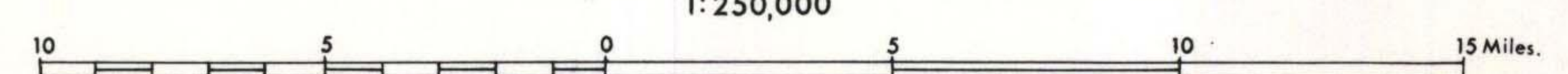
ISRIC
P.O. Box 353
6700 AJ Wageningen
The Netherlands



ISM - WAGENINGEN
country: South Africa.
subject: The ma
scale: 1:250.000
map ref.: SA 4.5.
libr. ref.: AF. 6.9.

VEGETATION OF THE TUGELA BASIN, NATAL by Denzil Edwards

1:250,000



Base map: South Africa 1:250,000 Topocadastral Series (1959). Pietermaritzburg, 1963.