

A. COAST VEGETATION.

- 1 Coast *Acacia karroo-A. nilotica-A. robusta* Thorn Scrub
- 2 Semi-coast Bush Clump Grassland Mosaic.
- 3 Semi-coast Secondary *Aristida junciformis* Grassland
- 4 Semi-coast Forest
- 5 *Spirostachys-Acacia burkei* Woodland
- 6 *Spirostachys* Valley Woodland
- 7 *Euphorbia tirucalli* Succulent Scrub
- 8 *Combretum apiculatum* Tree Veld

B. VALLEY VEGETATION.

- 9 Semi-deciduous Bush (*Acacia-Boscia-Olea-Schotia* Scrub)
- 10 *Sclerocarya-Acacia* Tree Veld
- 11 Dry Coast *Acacia karroo-A. nilotica* Thorn Veld
- 12 Interior *Acacia karroo-A. nilotica* Thorn Veld

C. INTERIOR BASINS VEGETATION.

- 13 *Themeda-Hyparrhenia* Grassland
- 14 Moist Transitional *Themeda-Hyparrhenia* Grassland
- 15 *Tristachya-Digitaria* Grassland
- 16 Transitional *Tristachya-Digitaria* Grassland

D. UPLANDS VEGETATION.

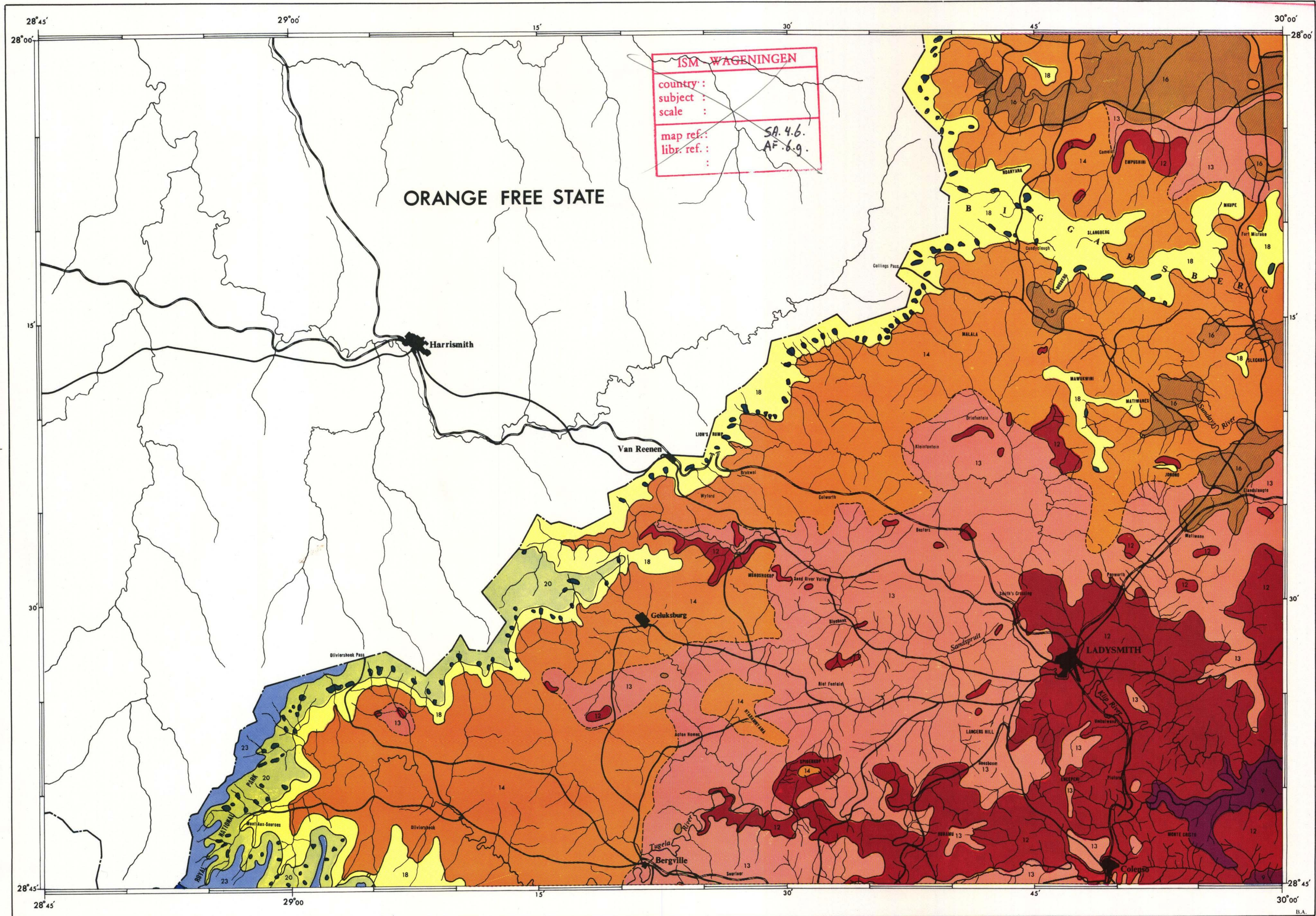
- 17 Mistbelt Secondary *Aristida junciformis* Grassland
- 18 *Themeda-Trachypogon* Highlands Grassland
- 19 *Themeda-Tristachya-Digitaria* Northern Highlands Grassland
- 20 Protea Savanna

E. MOUNTAIN VEGETATION.

- 21 Mistbelt Mixed *Podocarpus* Forest
- 22 Mountain *Podocarpus* Forest
- 23 Subalpine Fynbos and Grassland
- 24 Alpine Fynbos and Grassland

ISRIC
P.O. Box 353
6700 AJ Wageningen
The Netherlands

ISRIC - WAGENINGEN
country: South Africa
subject: *Themeda*
scale: 1:250,000
map ref.: SA 4.6
libr. ref.: AF 6.9



VEGETATION OF THE TUGELA BASIN, NATAL by Denzil Edwards

1:250,000

Base Map: South Africa 1:250,000 Topocadastral Series (1959). Pietermaritzburg, 1963.

