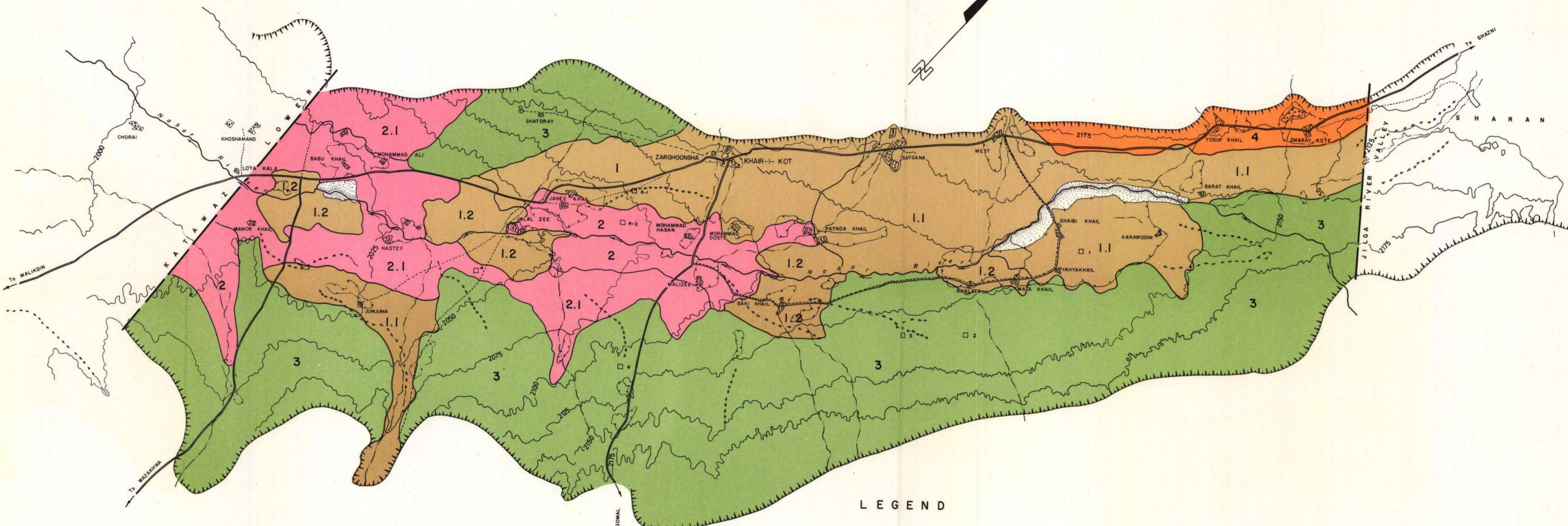
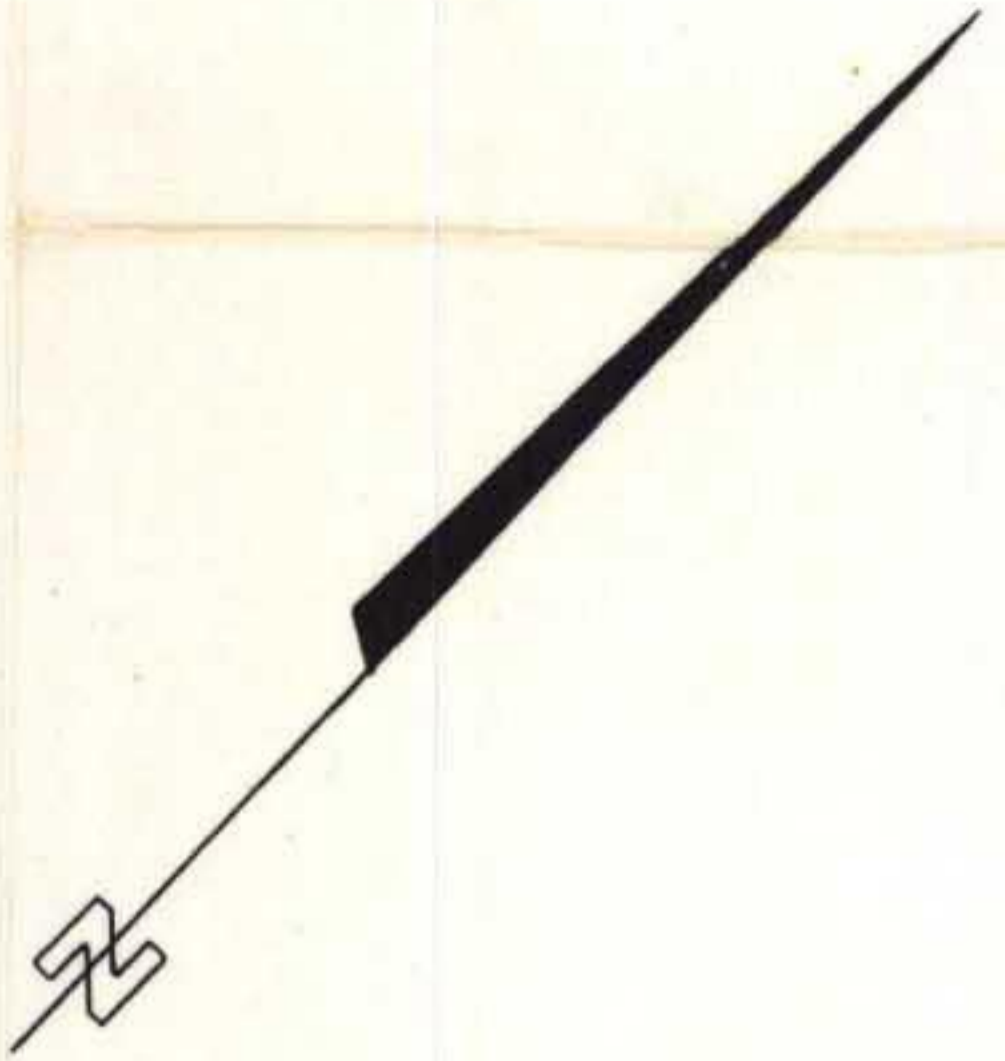
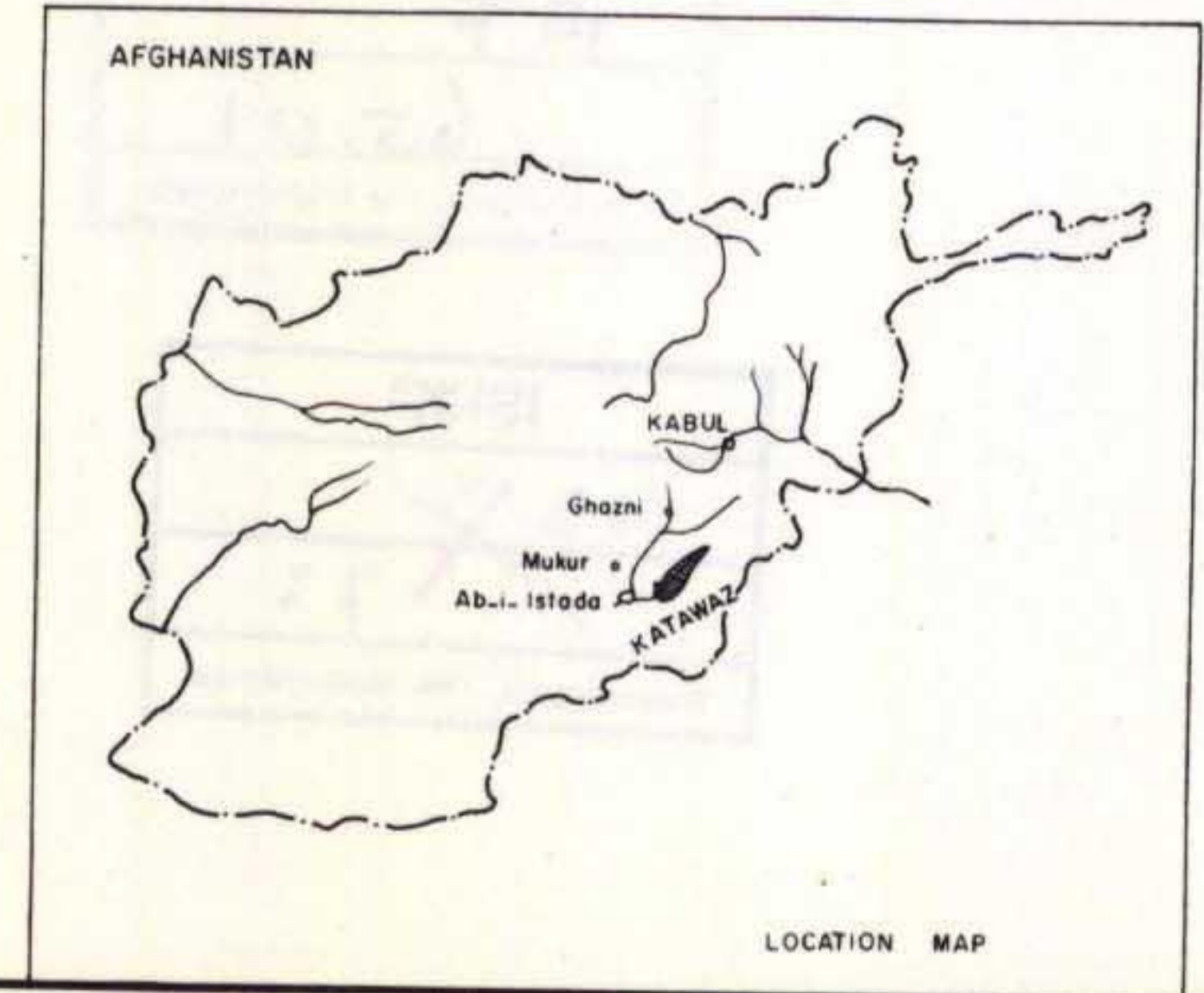


ISRIC
P.O. Box 353
6700 AJ Wageningen
The Netherlands



- LEGEND**
- ROADS
 - JEEP TRACKS
 - TRAILS
 - RIVER (Perennial)
 - SAND
 - VILLAGE
 - KAREZ
 - HILLS
 - DRAINAGE
 - CONTOURS



LEGEND

- 1 BROWN DESERT SOIL, SANDY LOAM TO LIGHT LOAM.
- 1.1 SAME AS 1 BUT LOAM.
- 1.2 SAME AS 1 BUT HIGHLY SALINE.
- 2 BROWN DESERT SOIL, SILT-LOAM TO CLAY LOAM, SALINE.
- 2.1 SAME AS 2 BUT LOAM.
- 3 REDDISH BROWN DESERT SOIL, COARSE SANDY LOAM TO SAND UNDERLAIN BY GRAVEL AT 20-30 Cm., COLLUVIAL DEPOSIT.
- 4 SAND AND STONE DEPOSITS.
- 5 CONSOLIDATED SANDS & DUNES
- PROFILE OF PHYSICAL PROPERTIES OF SOIL.

Compiled from Advance Copies 1:50 000
Afghan Geological Survey Maps

AFGHANISTAN & UNITED NATIONS SPECIAL FUND
LAND & WATER RESOURCES SURVEY

FOOD AND AGRICULTURE ORGANIZATION OF THE UNITED NATIONS

SOIL MAP
THE UPPER AND MIDDLE NAGAR RIVER VALLEY
(Katawaz District)

Approx. Scale
0 2 4 6 8 10 12 14 16 km

Surveyed Aug. 1962

Drawing No. Vol. IV-16