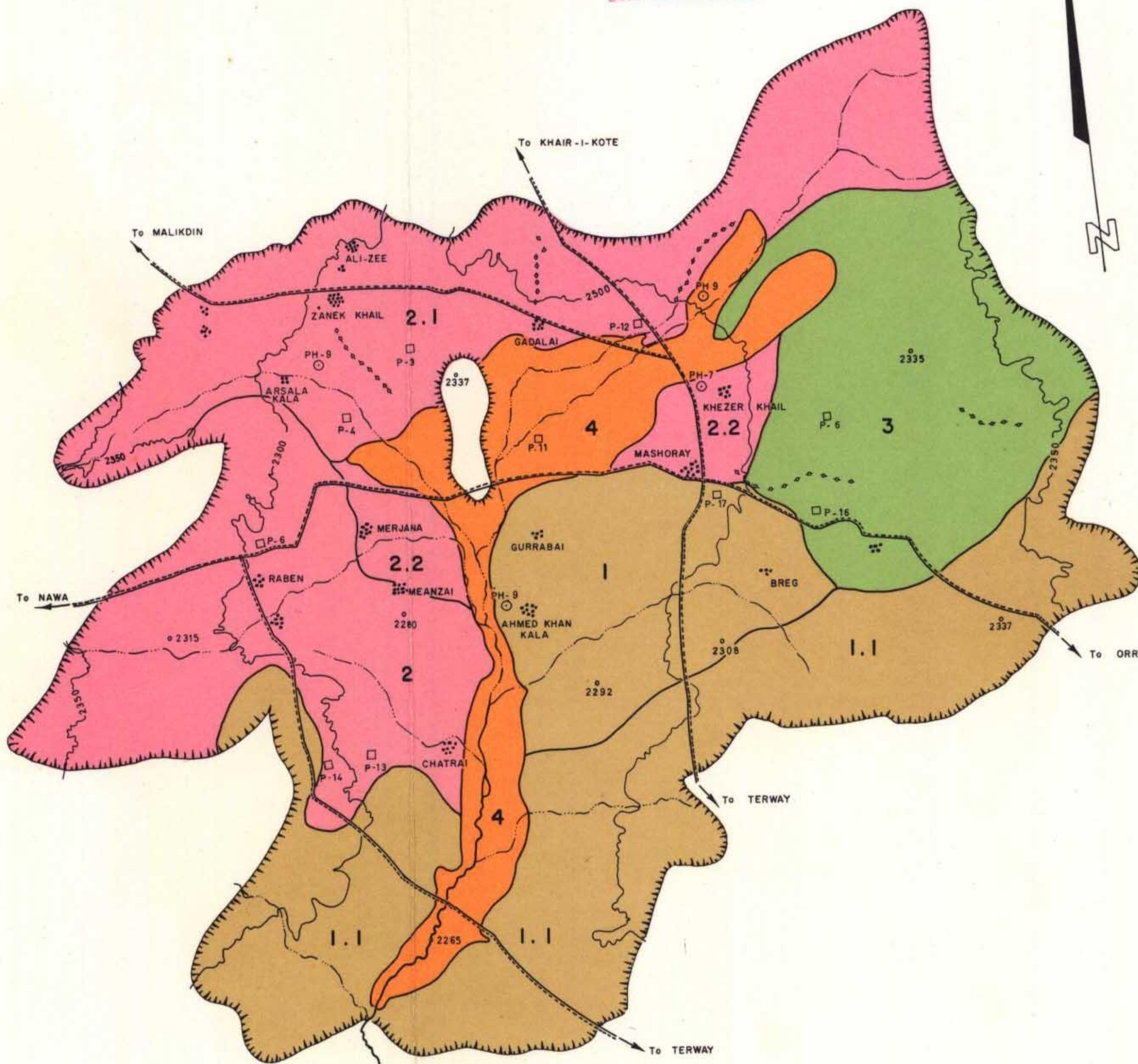


ISRIC  
P.O. Box 353  
6700 AJ Wageningen  
The Netherlands



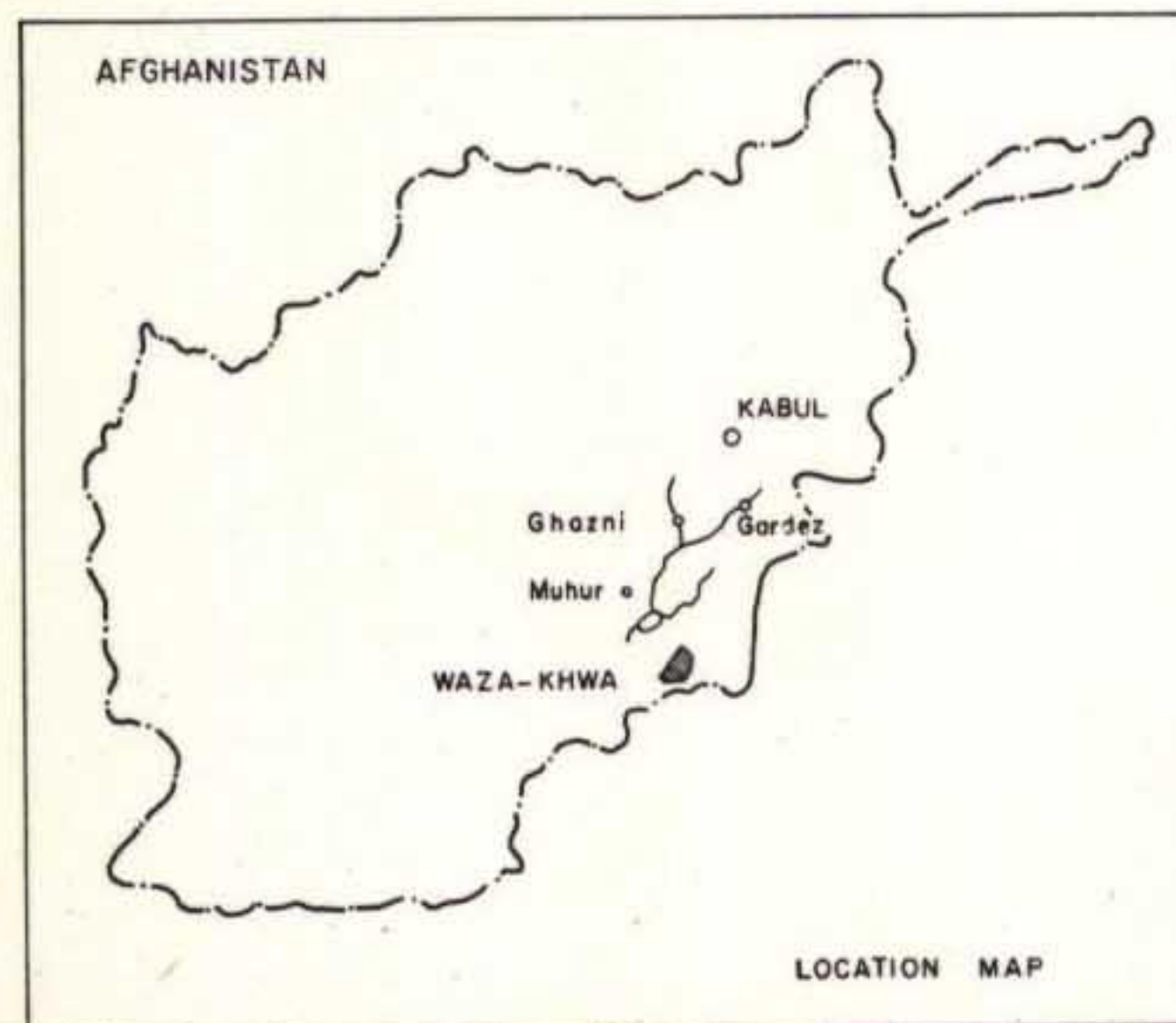
LEGEND

- 1. DESERT, DARK REDDISH BROWN, SAND-LOAMY-SAND, AT DEPTH OF 70-120 Cm, UNDERLAIN BY GRAVELS, HIGHLY CALCAREOUS.
- 1.1 SHALLOW COARSE SOIL, AT 20-30 Cm, UNDERLAIN BY ROCKS.
- 2. DESERT, BROWN SOIL, SANDYLOAM TO LOAM, ERODED, AT 40-50 Cm. UNDERLAIN BY COLLUVIAL GRAVELS AND  $CaCO_3$  PATCHES.
- 2.1 THE SAME AS 2 BUT STRONGLY ERODED, SUB-HORIZON CEMENTED WITH CARBONATES AND GRAVELS AT DEPTH OF 60-200 Cm.
- 2.2 THE SAME AS 2, BUT SALINE.
- 3. DESERT BROWN LOAMY SAND-SAND, UNDERLAIN BY STRATIFIED SANDY HORIZONS.
- 4. SOLONCHAK, LOAM, UNDERLAIN BY SILTY OR SANDY CLAY LOAMS.
- PROFILE NUMBER.
- PROFILE OF PHYSICAL PROPERTIES.

LEGEND

- JEEP TRACK
- TRAIL
- RIVER
- KAREZ
- DRAINAGE
- VILLAGE
- HILLY TERRAIN
- SOIL - Interpreted from Aerial Photographs.

Compiled from Advance Copies 1:50,000  
Afghan Geological Survey Maps

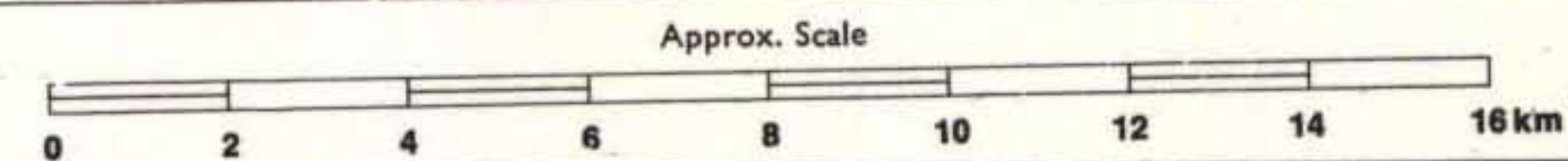


LOCATION MAP

AFGHANISTAN & UNITED NATIONS SPECIAL FUND  
LAND & WATER RESOURCES SURVEY

FOOD AND AGRICULTURE ORGANIZATION OF THE UNITED NATIONS

SOIL MAP  
THE WAZA KHWA AREA



Surveyed Oct. 1962

Drawing No. Vol. IV-22