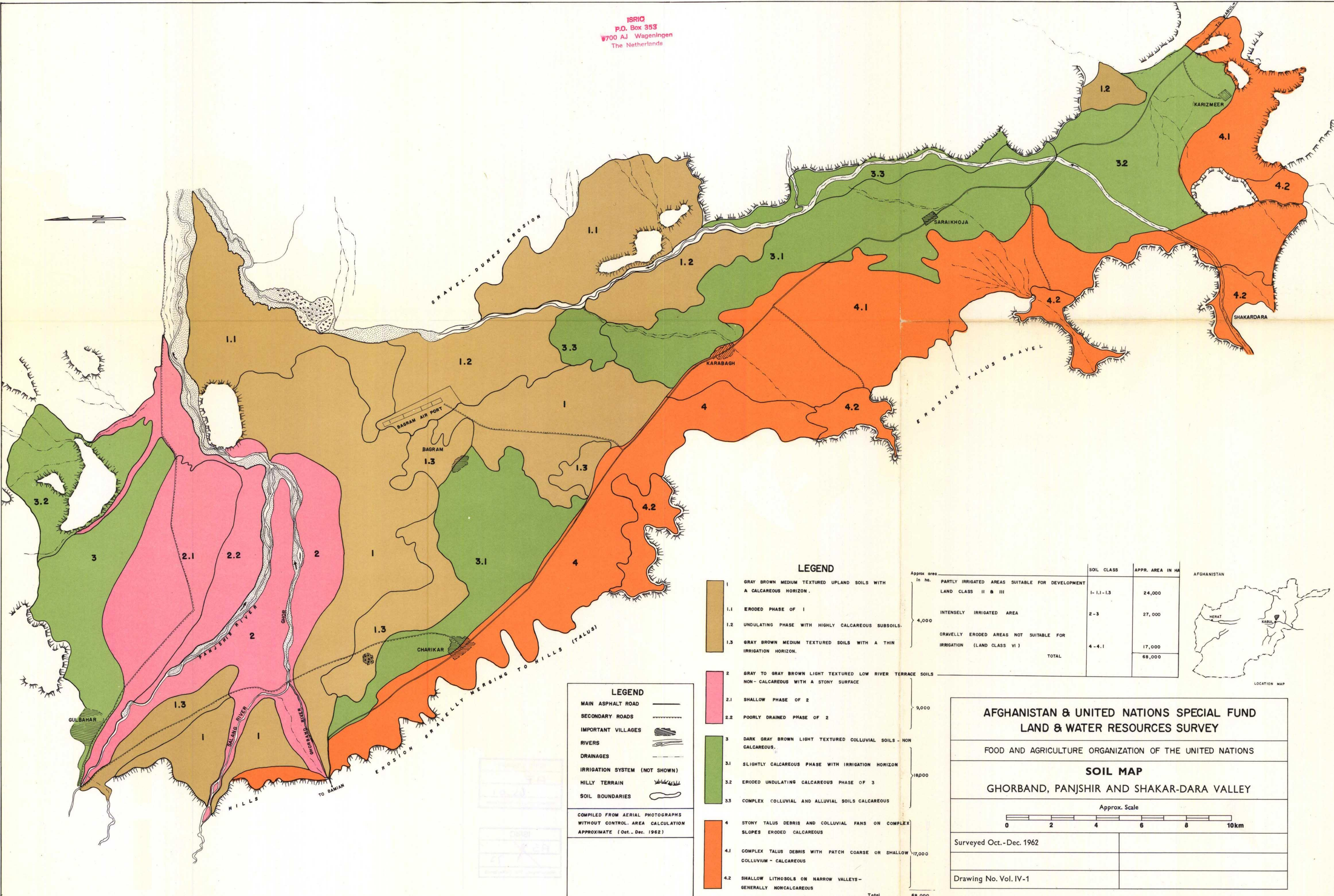


ISRIC
P.O. Box 353
W700 AJ Wageningen
The Netherlands



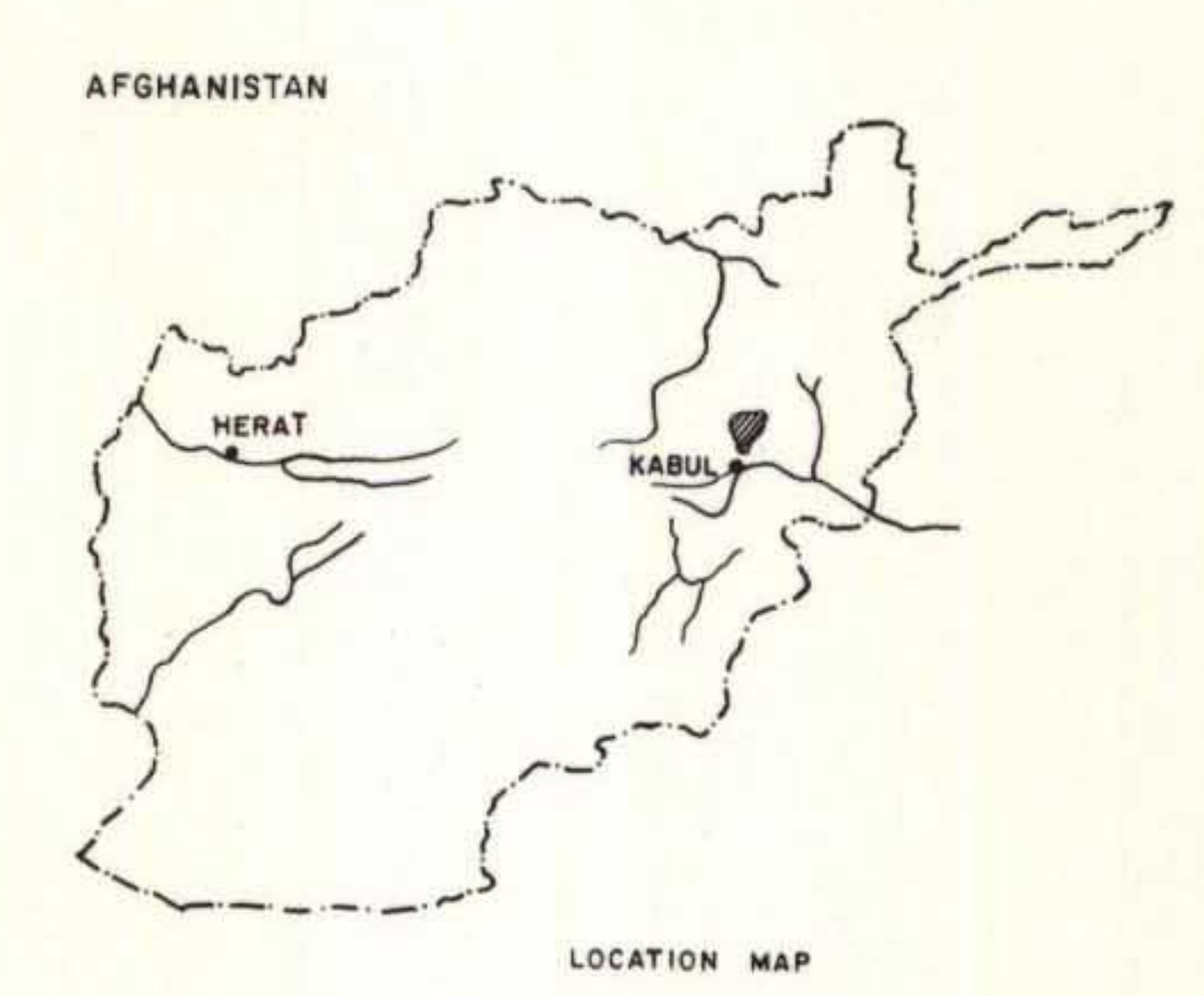
LEGEND

- 1 GRAY BROWN MEDIUM TEXTURED UPLAND SOILS WITH A CALCAREOUS HORIZON.
- 1.1 ERODED PHASE OF 1
- 1.2 UNDULATING PHASE WITH HIGHLY CALCAREOUS SUBSOILS.
- 1.3 GRAY BROWN MEDIUM TEXTURED SOILS WITH A THIN IRRIGATION HORIZON.
- 2 GRAY TO GRAY BROWN LIGHT TEXTURED LOW RIVER TERRACE SOILS NON-CALCAREOUS WITH A STONY SURFACE
- 2.1 SHALLOW PHASE OF 2
- 2.2 POORLY DRAINED PHASE OF 2
- 3 DARK GRAY BROWN LIGHT TEXTURED COLLUVIAL SOILS - NON CALCAREOUS.
- 3.1 SLIGHTLY CALCAREOUS PHASE WITH IRRIGATION HORIZON
- 3.2 ERODED UNDULATING CALCAREOUS PHASE OF 3
- 3.3 COMPLEX COLLUVIAL AND ALLUVIAL SOILS CALCAREOUS
- 4 STONY TALUS DEBRIS AND COLLUVIAL FANS ON COMPLEX SLOPES ERODED CALCAREOUS
- 4.1 COMPLEX TALUS DEBRIS WITH PATCH COARSE OR SHALLOW COLLUVIUM - CALCAREOUS
- 4.2 SHALLOW LITHOSOLS ON NARROW VALLEYS - GENERALLY NONCALCAREOUS

- LEGEND**
- MAIN ASPHALT ROAD
 - SECONDARY ROADS
 - IMPORTANT VILLAGES
 - RIVERS
 - DRAINAGES
 - IRRIGATION SYSTEM (NOT SHOWN)
 - HILLY TERRAIN
 - SOIL BOUNDARIES

COMPILED FROM AERIAL PHOTOGRAPHS WITHOUT CONTROL. AREA CALCULATION APPROXIMATE (Oct.-Dec. 1962)

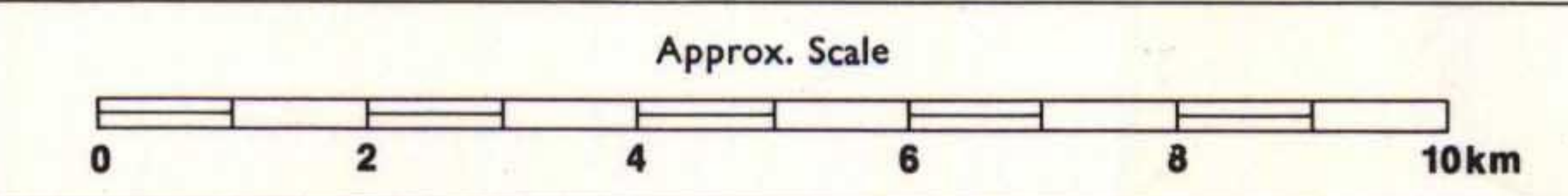
Soil Class	Approx. Area in ha
1-1.1-1.3	24,000
2-3	27,000
4-4.1	17,000
TOTAL	68,000



**AFGHANISTAN & UNITED NATIONS SPECIAL FUND
LAND & WATER RESOURCES SURVEY**

FOOD AND AGRICULTURE ORGANIZATION OF THE UNITED NATIONS

**SOIL MAP
GHORBAND, PANJSHIR AND SHAKAR-DARA VALLEY**



Surveyed Oct.-Dec. 1962

Drawing No. Vol. IV-1

Total 68 000