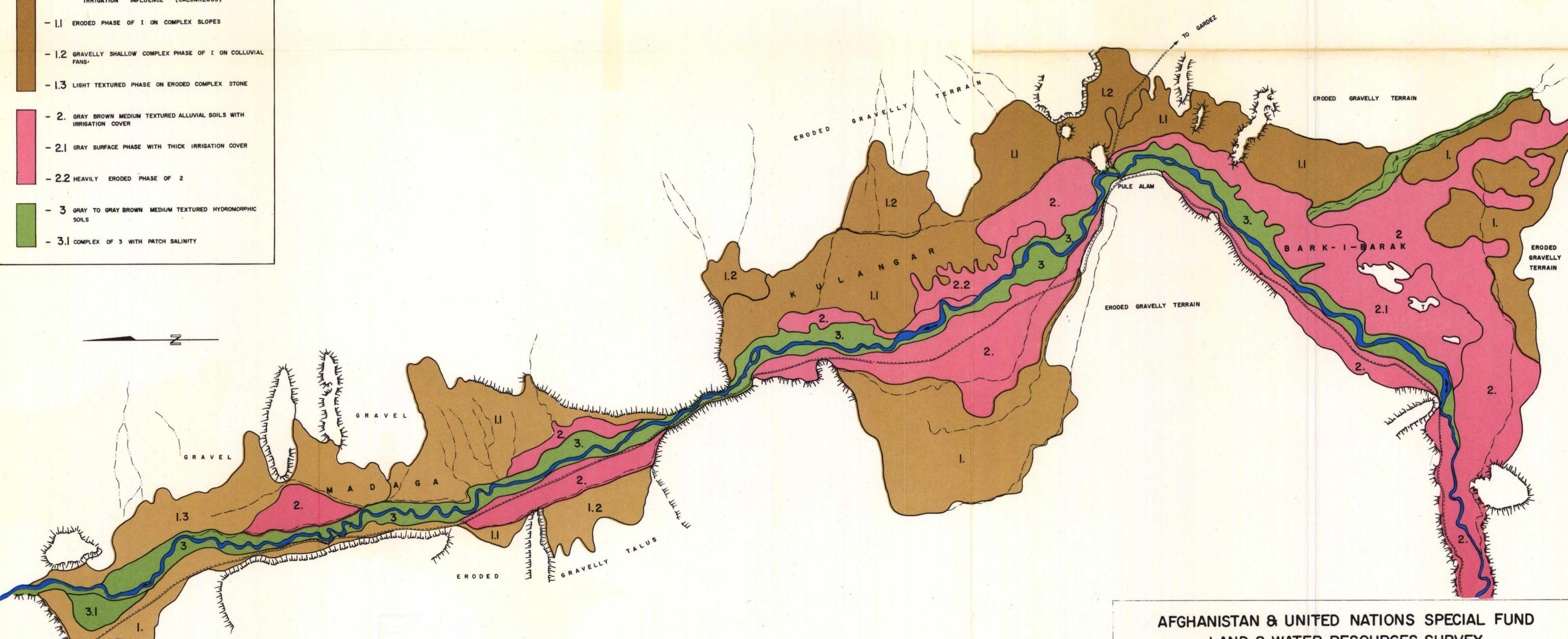


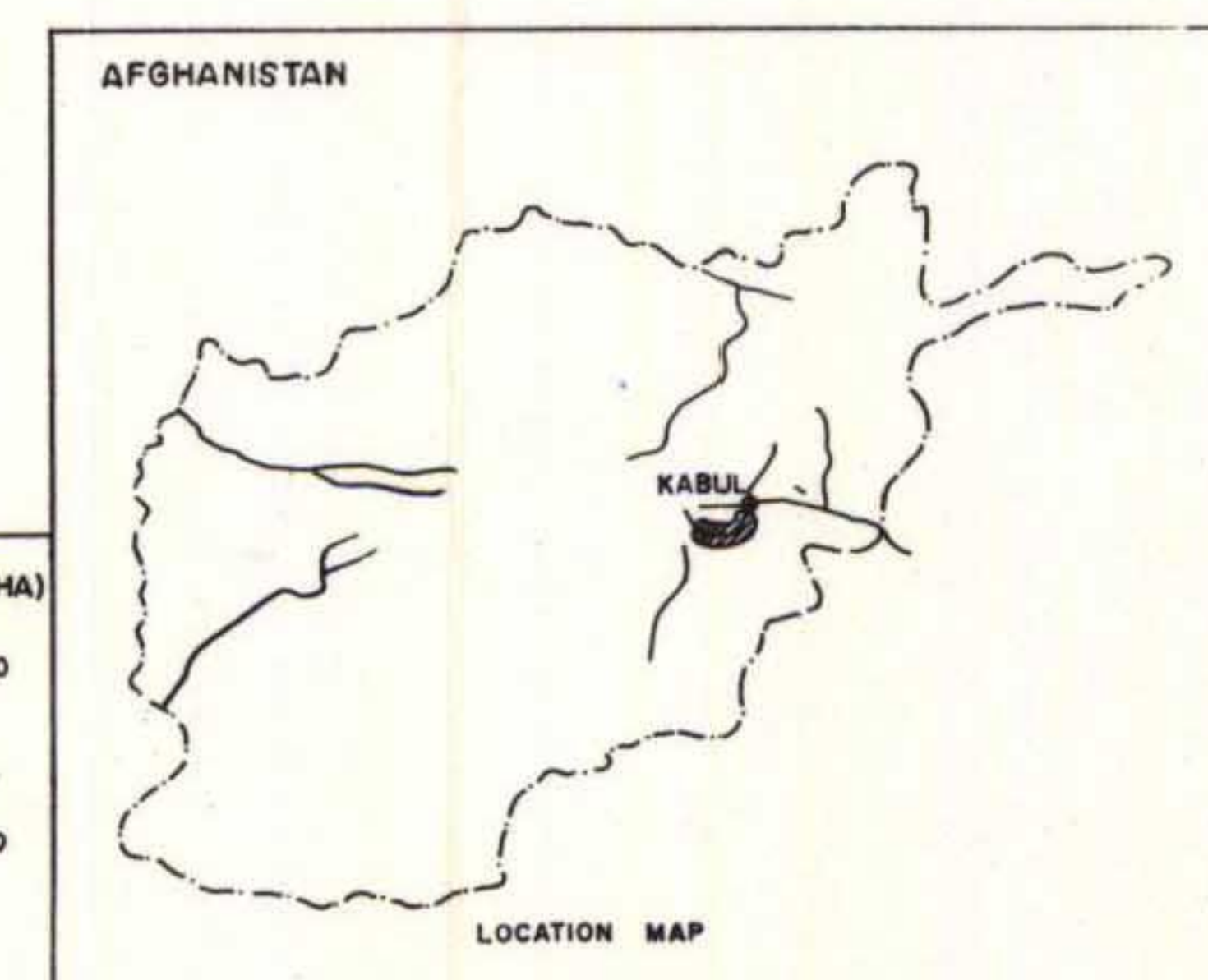
ISRIC  
P.O. Box 353  
6700 AJ Wageningen  
The Netherlands

**LEGEND**

- 1. BROWN MEDIUM TEXTURED UPLAND SOILS WITH SLIGHT IRRIGATION INFLUENCE (CALCAREOUS)
- 1.1 ERODED PHASE OF 1 ON COMPLEX SLOPES
- 1.2 GRAVELLY SHALLOW COMPLEX PHASE OF 1 ON COLLUVIAL FANS
- 1.3 LIGHT TEXTURED PHASE ON ERODED COMPLEX STONE
- 2. GRAY BROWN MEDIUM TEXTURED ALLUVIAL SOILS WITH IRRIGATION COVER
- 2.1 GRAY SURFACE PHASE WITH THICK IRRIGATION COVER
- 2.2 HEAVILY ERODED PHASE OF 2
- 3. GRAY TO GRAY BROWN MEDIUM TEXTURED HYDROMORPHIC SOILS
- 3.1 COMPLEX OF 3 WITH PATCH SALINITY



- Road
- Bridge
- River
- Main Irrigation Canal
- Tapeh
- Hills

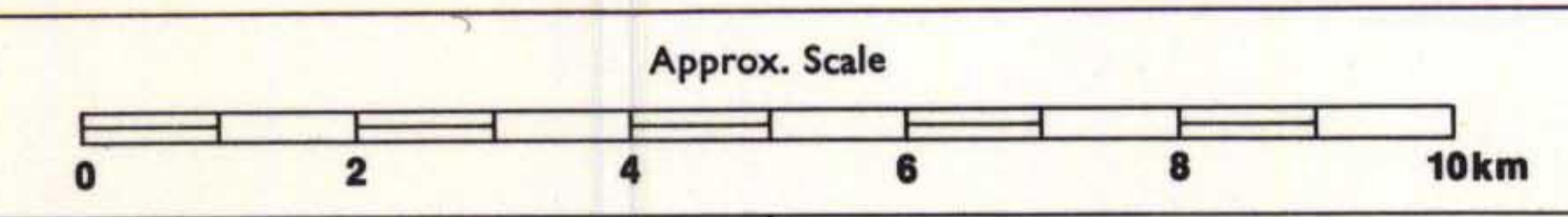


	SOIL CLASS	AREA (HA)
PARTLY IRRIGATED AREAS SUITABLE FOR DEVELOPMENT LAND CLASS II - III	1.	13,000
INTENSELY IRRIGATED AREA	2-3.	12,000
GRAVELLY ERODED AREAS NOT SUITABLE FOR IRRIGATION LAND CLASS VI.		

**AFGHANISTAN & UNITED NATIONS SPECIAL FUND  
LAND & WATER RESOURCES SURVEY**

FOOD AND AGRICULTURE ORGANIZATION OF THE UNITED NATIONS

**SOIL MAP  
PART OF THE LOGAR VALLEY**



Surveyed Dec. 1962	Compiled from uncontrolled air photographs
Drawing No. Vol. IV-4	