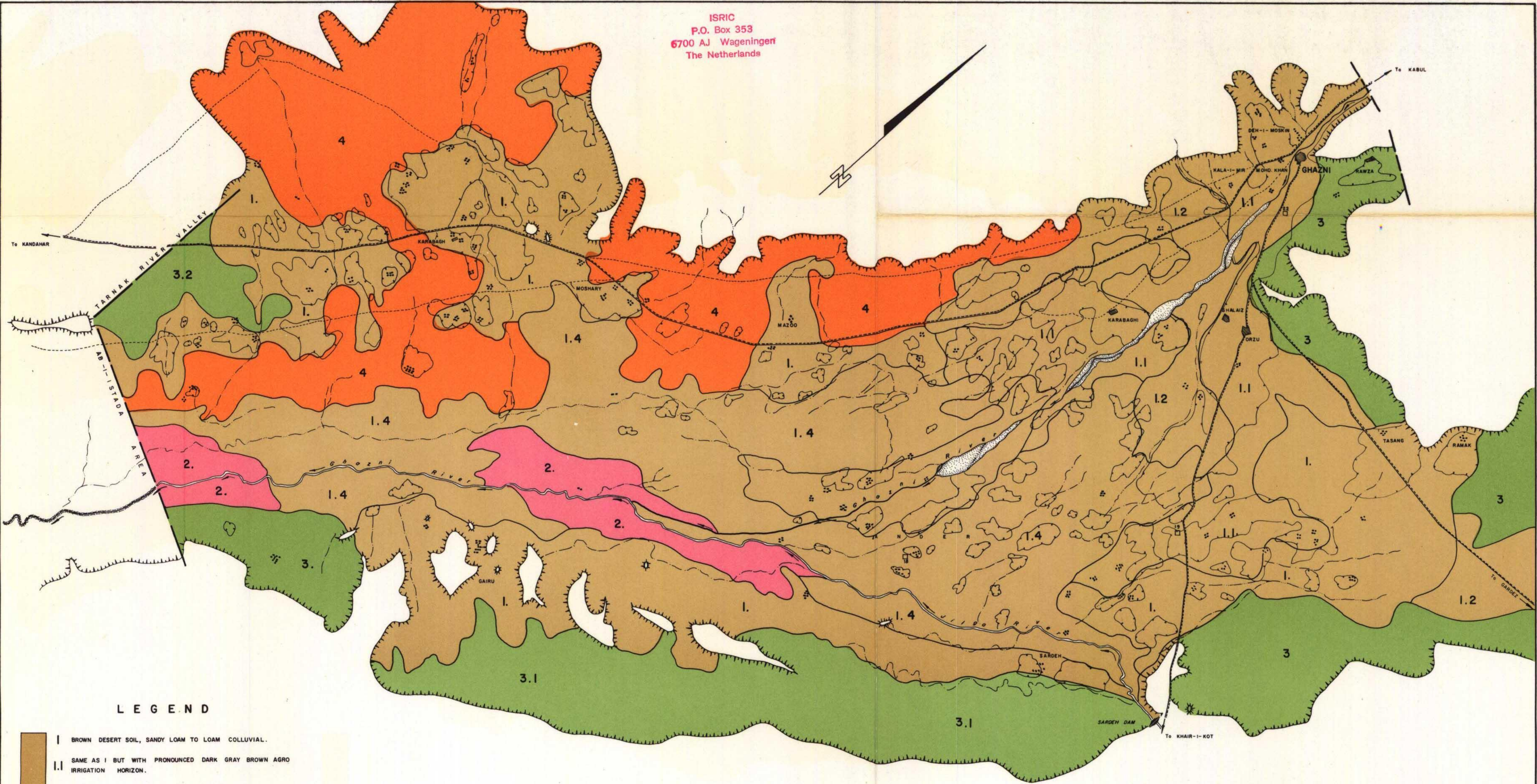


ISRIC
 P.O. Box 353
 6700 AJ Wageningen
 The Netherlands

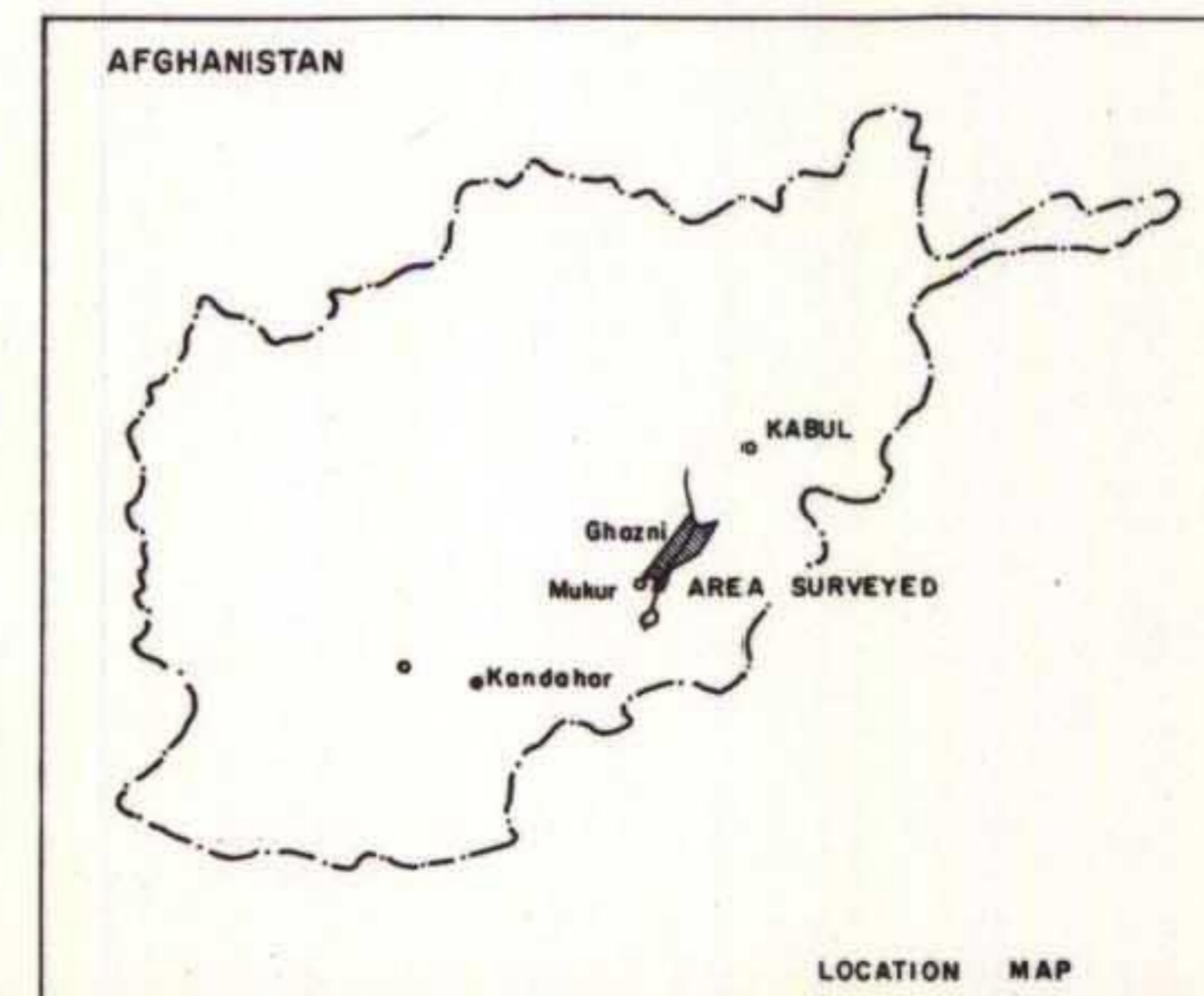


LEGEND

- 1 BROWN DESERT SOIL, SANDY LOAM TO LOAM COLLUVIAL.
- 1.1 SAME AS 1 BUT WITH PRONOUNCED DARK GRAY BROWN AGRO IRRIGATION HORIZON.
- 1.2 SAME AS 1 BUT SANDY LOAM TO LOAM SAND.
- 1.3 BROWN DESERT SOIL, LOAMY SAND TO SANDY LOAM, UNDERLAIN BY SANDY ALLUVIAL DEPOSITS.
- 1.4 STRONGLY ERODED AND SALINE PHASE OF 1.3.
- 2 HYDROMORPHIC DARK GRAY BROWN, SALINE SOIL LOAM TO SILTY SANDY LOAM.
- 3 REDDISH BROWN DESERT SOIL COARSE SANDY LOAM TO SAND.
- 3.1 THE SAME AS 3 BUT STRONGLY ERODED STONY.
- 3.2 THE SAME AS 3.1 BUT DEVELOPED ON HILLOCKS.
- 4 CONSOLIDATED SAND.
- PROFILE FOR PHYSICAL PROPERTIES OF SOILS.

LEGEND

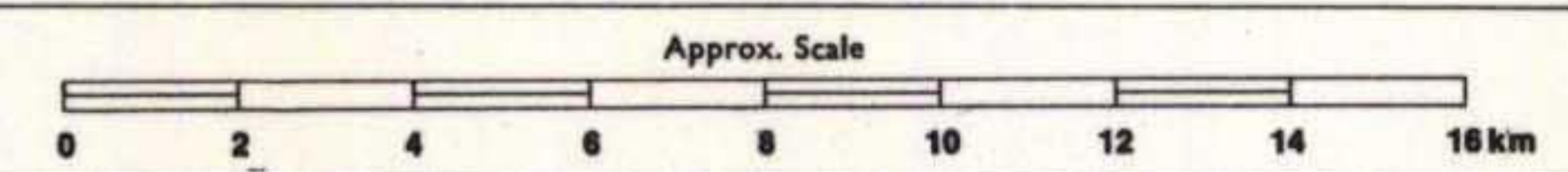
- JEEP TRACK
- TRAIL
- RIVER
- SAND
- DRAINAGE
- CANAL
- KAREZ
- VILLAGE
- HILLY TERRAIN
- CULTIVATED AREA



AFGHANISTAN & UNITED NATIONS SPECIAL FUND
 LAND & WATER RESOURCES SURVEY

FOOD AND AGRICULTURE ORGANIZATION OF THE UNITED NATIONS

**SOIL MAP
 THE GHAZNI VALLEY**



Surveyed May 1963

Drawing No. Vol. IV-10

Compiled from uncontrolled Air Photographs