

62°00'

62°30'

63°00'

34°20'

34°20'

62°00'

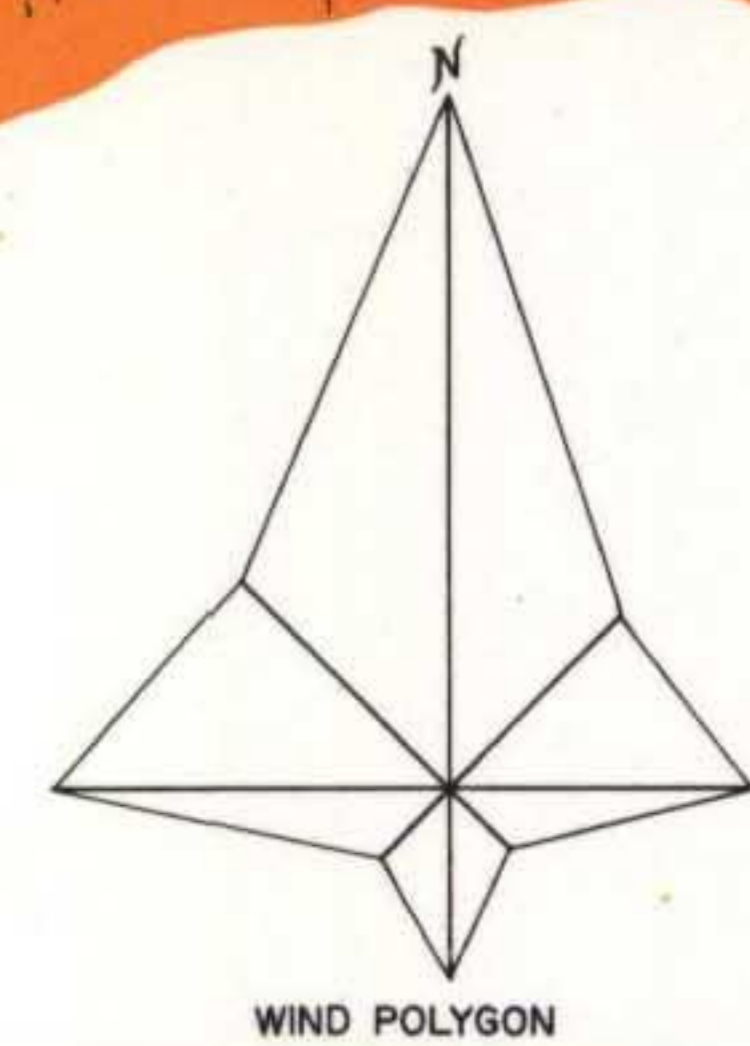
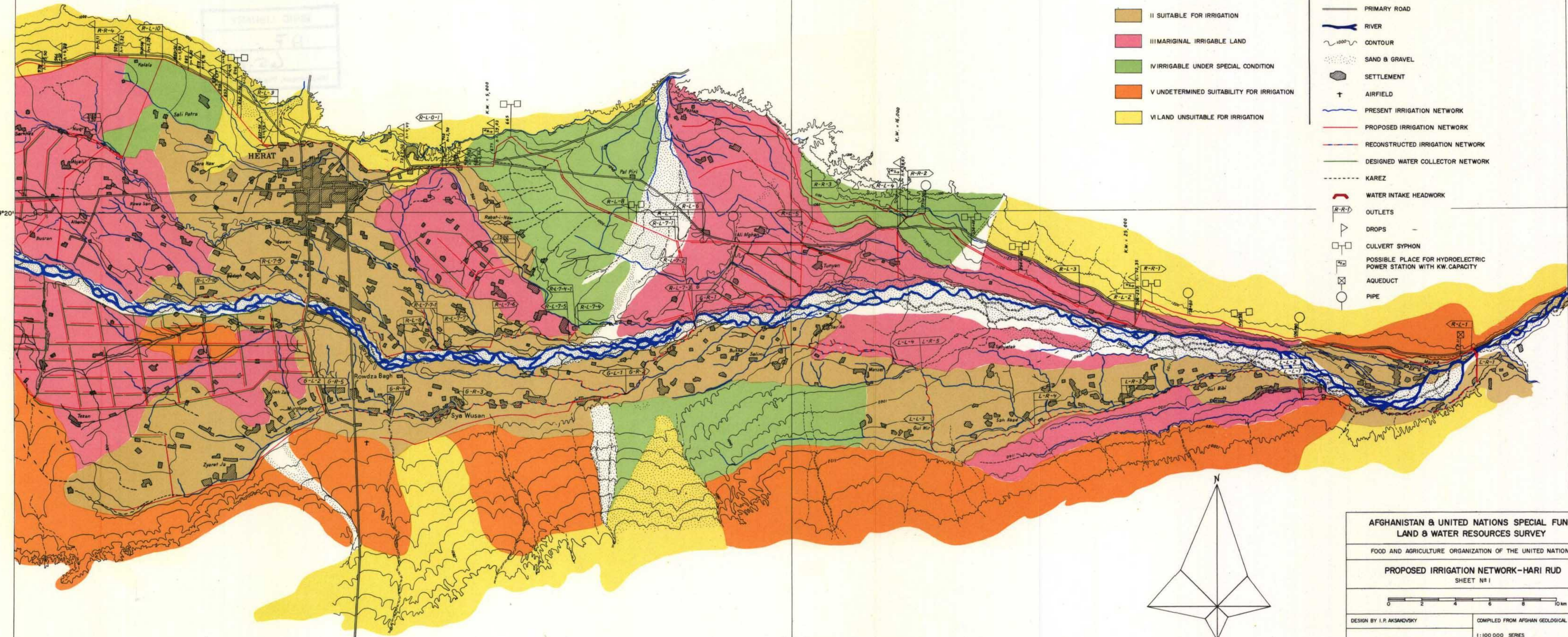
62°30'

LAND CLASS

- II SUITABLE FOR IRRIGATION
- III ORIGINAL IRRIGABLE LAND
- IV IRRIGABLE UNDER SPECIAL CONDITION
- V UNDETERMINED SUITABILITY FOR IRRIGATION
- VI LAND UNSUITABLE FOR IRRIGATION

LEGEND

- PRIMARY ROAD
- RIVER
- CONTOUR
- SAND & GRAVEL
- SETTLEMENT
- AIRFIELD
- PRESENT IRRIGATION NETWORK
- PROPOSED IRRIGATION NETWORK
- RECONSTRUCTED IRRIGATION NETWORK
- DESIGNED WATER COLLECTOR NETWORK
- KAREZ
- WATER INTAKE HEADWORK
- OUTLETS
- DROPS
- CULVERT SYPHON
- POSSIBLE PLACE FOR HYDROELECTRIC POWER STATION WITH KW CAPACITY
- AQUEDUCT
- PIPE



AFGHANISTAN & UNITED NATIONS SPECIAL FUND LAND & WATER RESOURCES SURVEY	
FOOD AND AGRICULTURE ORGANIZATION OF THE UNITED NATIONS	
PROPOSED IRRIGATION NETWORK - HARI RUD SHEET N° 1	
DESIGN BY I. P. AKSANDOVSKY	COMPILED FROM AFGHAN GEOLOGICAL SURVEY
	1:100 000 SERIES
DRAWING N° VOL. VI - 2, VOL. I - 10	DATE MARCH 1964