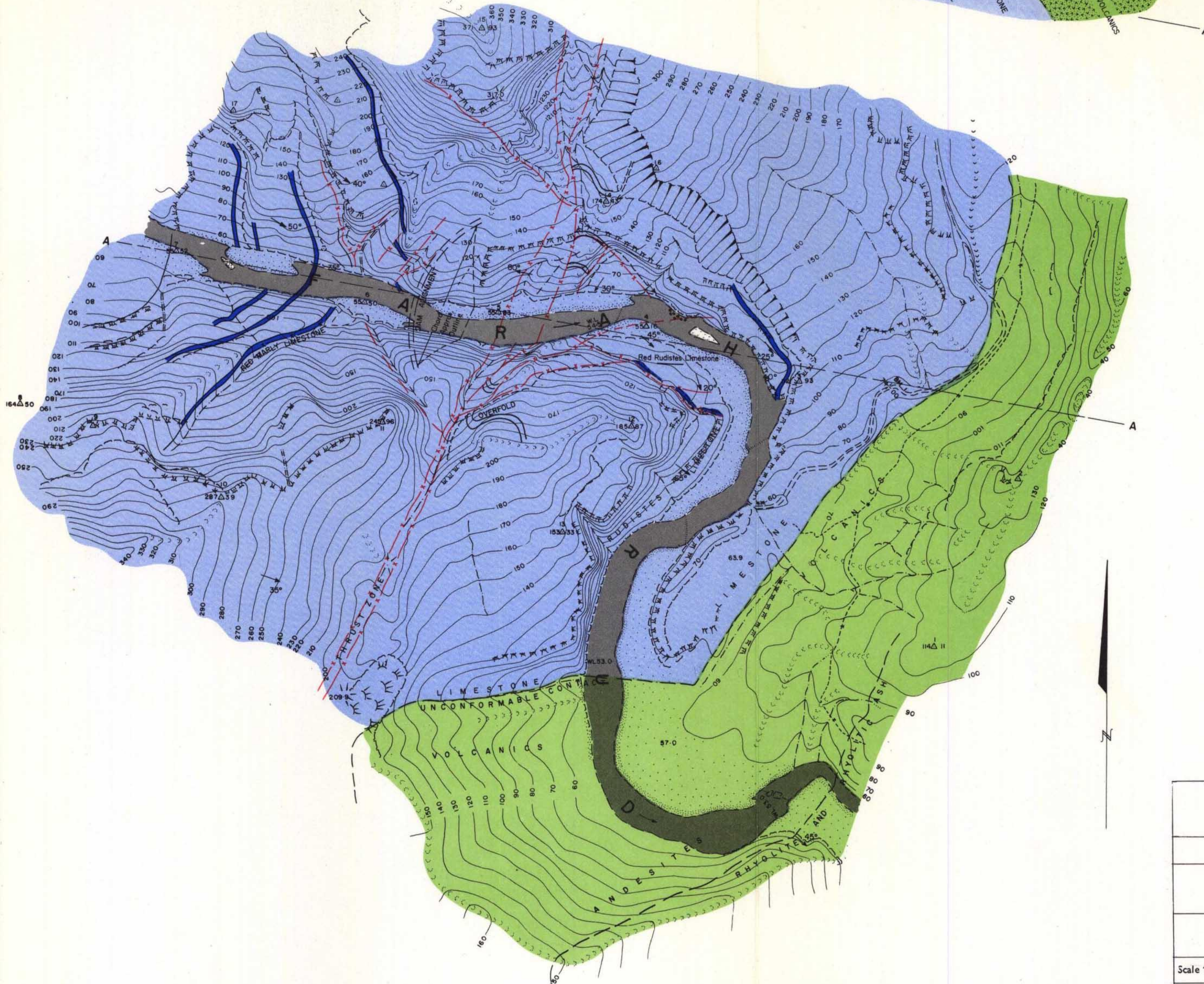
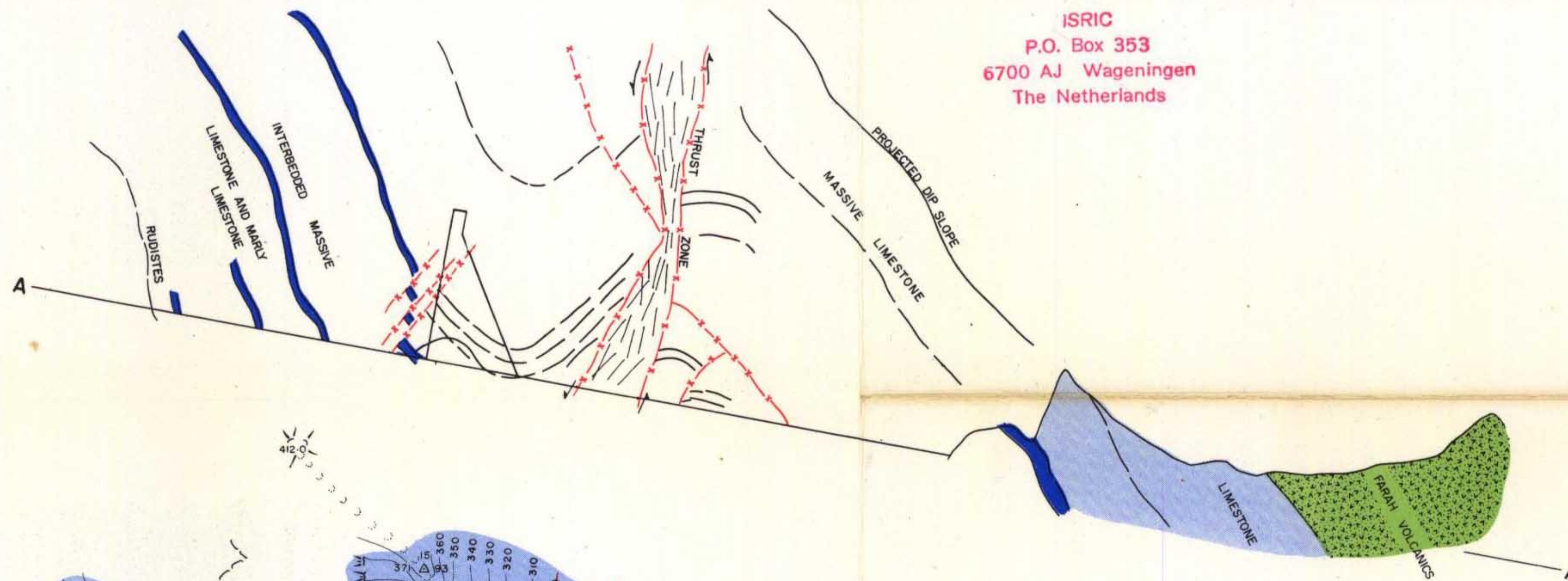



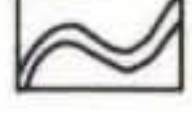
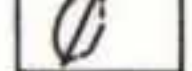


ISRIC
 P.O. Box 353
 6700 AJ Wageningen
 The Netherlands



KEY

-  FARAH VOLCANICS
-  CRETACEOUS LIMESTONE WITH BANDS OF MARLY LIMESTONE
-  FAULTS & MAJOR JOINTS
-  FOLD STRUCTURES
-  TENTATIVE POSITION OF 90m. DAM

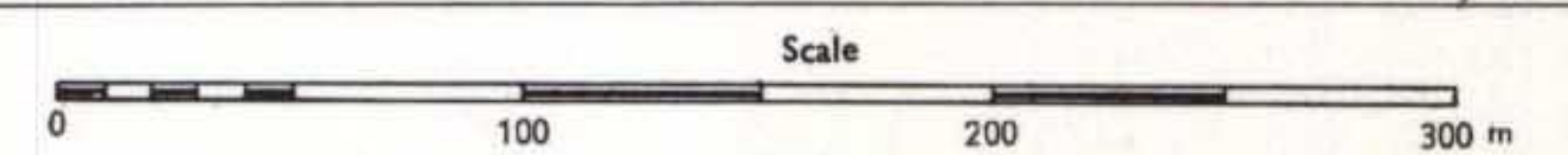
ISRIC LIBRARY
 AF
 65.01
 Wageningen, The Netherlands

ISRIC
 AS
 13-2
 Wageningen, The Netherlands

**AFGHANISTAN & UNITED NATIONS SPECIAL FUND
 LAND & WATER RESOURCES SURVEY**

FOOD AND AGRICULTURE ORGANIZATION OF THE UNITED NATIONS

**GEOLOGICAL SKETCH MAP
 PROPOSED LASHKARGAH DAM SITE 1:4000**



Scale 1:4000	Contour V.I. : 10 metres
Date: October 1962	Reconnaissance October 1962
Drawing No. Vol. II-9	Details inserted on Map June 1963 in Kabul without return to site