

The West Virginia portion of this map was prepared in cooperation with the WEST VIRGINIA GEOLOGICAL AND ECONOMIC SURVEY

The Pennsylvania portion of this map was prepared in cooperation with the COMMONWEALTH OF PENNSYLVANIA DEPARTMENT OF ENVIRONMENTAL RESOURCES

ISM - WAGENINGEN
country: USA
subject: Wetland
scale: 1:100,000
map ref.: U.S. 42-6
libr. ref.:

LAND USE SERIES
MAP L-113
LAND USE AND LAND COVER, 1974-76
BALTIMORE, MARYLAND; PENNSYLVANIA,
VIRGINIA; WEST VIRGINIA
EXPLANATION

- | | |
|---------------------------------|--|
| 1 URBAN OR BUILT-UP LAND | 11 Residential and services |
| | 12 Industrial |
| | 13 Transportation, communications |
| | 14 Industrial and commercial complexes |
| | 15 Mixed urban or built-up land |
| | 16 Other urban or built-up land |
| 2 AGRICULTURAL LAND | 21 Cropland and pasture |
| | 22 Nurseries, and ornamental horticultural areas |
| | 23 Confined feeding operations |
| | 24 Other agricultural land |
| 3 RANGELAND | 31 Herbaceous rangeland |
| | 32 Shrub and brush rangeland |
| | 33 Mixed rangeland |
| 4 FOREST LAND | 41 Deciduous forest land |
| | 42 Evergreen forest land |
| | 43 Mixed forest land |
| 5 WATER | 51 Streams and canals |
| | 52 Lakes |
| | 53 Rivers |
| | 54 Bays and estuaries |
| 6 WETLAND | 61 Forested wetland |
| | 62 Nonforested wetland |
| 7 BARREN LAND | 71 Dry salt flats |
| | 72 Beaches |
| | 73 Sandy areas other than beaches |
| | 74 Strip mines, quarries, and gravel pits |
| | 75 Transitional areas |
| | 76 Mixed barren land |
| 8 TUNDRA | 81 Shrub and brush tundra |
| | 82 Herbaceous tundra |
| | 83 Bare ground tundra |
| | 84 Wet tundra |
| | 85 Mixed tundra |
| 9 PERENNIAL SNOW OR ICE | 91 Perennial snowfields |
| | 92 Glaciers |

For definitions of Level I and Level II categories see U.S. Geological Survey Professional Paper 964, A Land use and land cover classification system for use with remote sensing data, 1982, by E. F. Hart, J. T. Reich, and R. E. Winer.

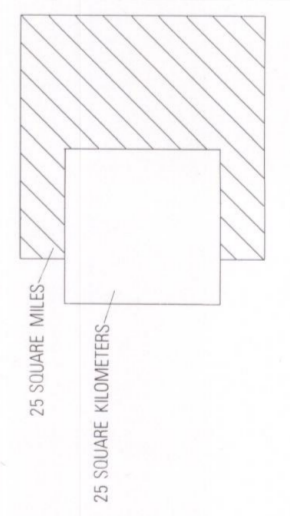
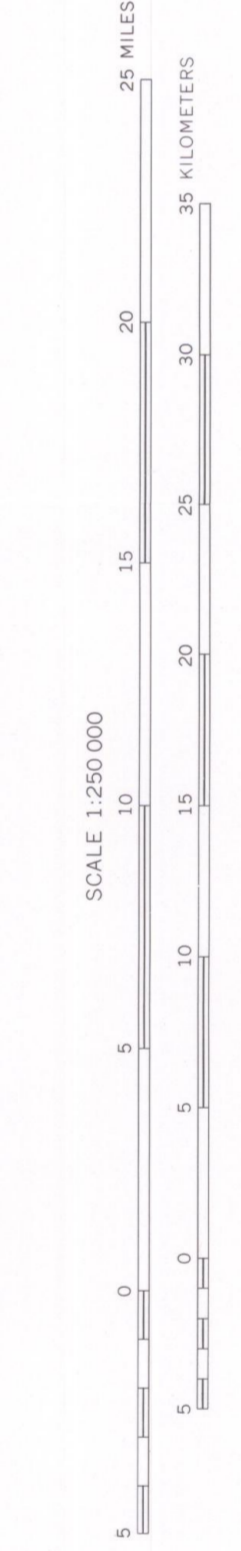
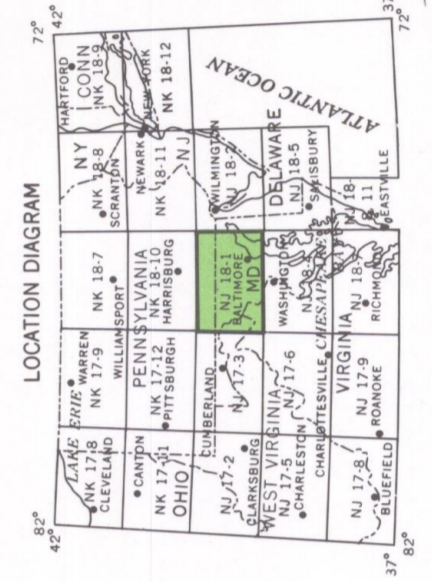
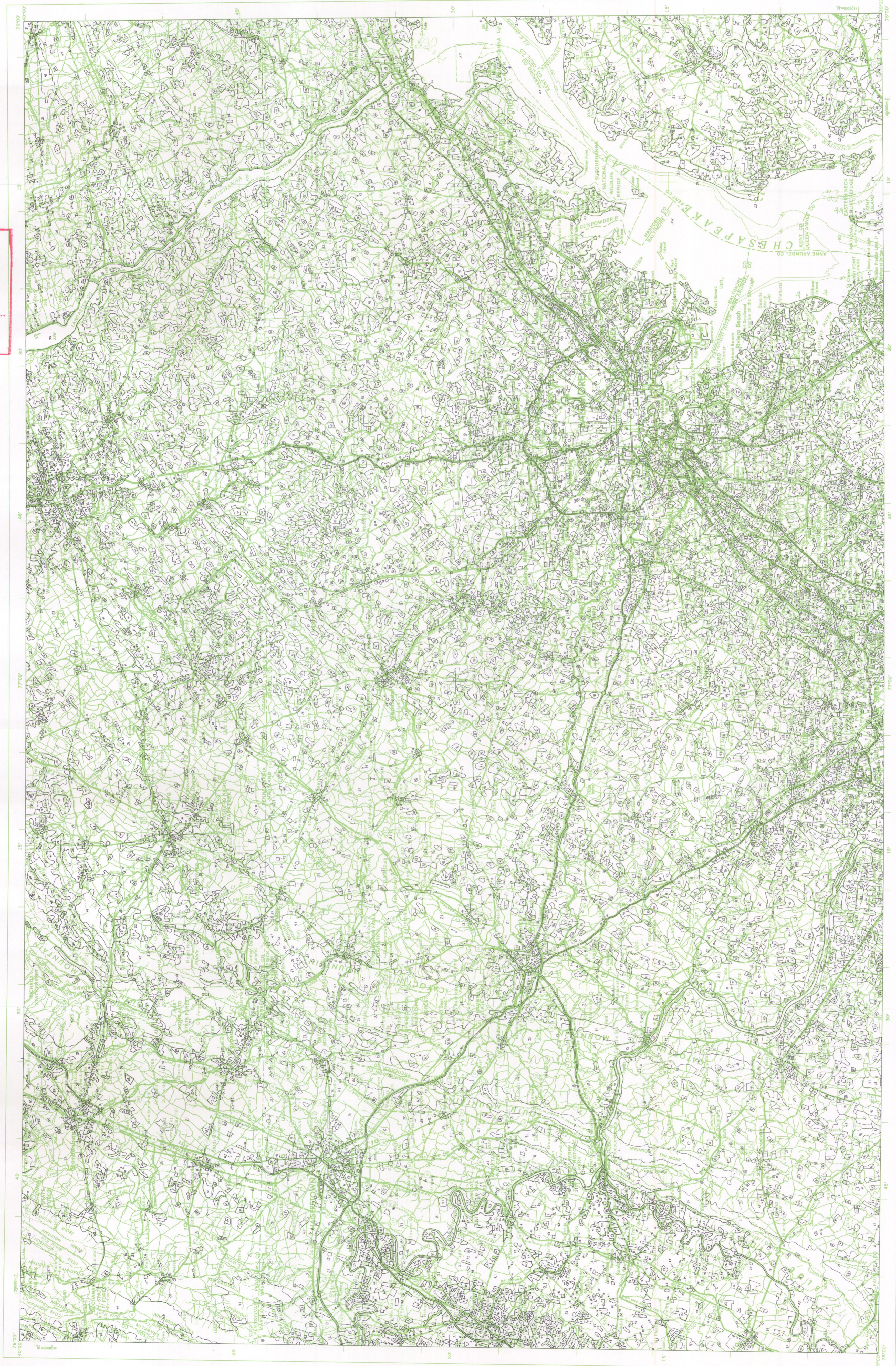
The development of a geographic information system for the West Virginia portion of this map was described in U.S. Geological Survey Professional Paper 1059, GISAS: A geographic information system for the West Virginia portion of this map, and land cover data, 1977, by W. B. Mitchell, S. C. Gault, K. E. Anderson, R. G. Fegans, and C. A. Hallam.

Land use and land cover information compiled from source materials dated 1974-76.

Minimum mapping units are 4 hectares (10 acres) for Level II categories 11-17, 22-24, 51-54, 75, and urban occurrences of 76; and 10 hectares (25 acres) for all other Level II categories.

For compilation specifications see U.S. Geological Survey Professional Paper 964, A Land use and land cover classification system for use with remote sensing data, 1982, by E. F. Hart, J. T. Reich, and R. E. Winer, and U.S. Geological Survey Professional Paper 1059, GISAS: A geographic information system for the West Virginia portion of this map, and land cover data, 1977, by W. B. Mitchell, S. C. Gault, K. E. Anderson, R. G. Fegans, and C. A. Hallam.

Compilation verified by field check.



LAND USE AND LAND COVER, 1974-76
BALTIMORE, MARYLAND; PENNSYLVANIA; VIRGINIA; WEST VIRGINIA