

ISM - WAGENINGEN
country : USA
subject : Thema
scale : 1:125,000
map ref. : US 42.7
libr. ref. : -

LAND USE SERIES
MAP L-118
LAND USE AND LAND COVER, 1975-76
DENVER, COLORADO
EXPLANATION

- 1 URBAN OR BUILT-UP LAND**
 - 11 Residential
 - 12 Commercial and services
 - 13 Industrial and manufacturing
 - 14 Transportation, communications and utilities
 - 15 Industrial and commercial
 - 16 Mixed urban or built-up land
 - 17 Other urban or built-up land
- 2 AGRICULTURAL LAND**
 - 21 Cropland and pasture
 - 22 Orchards, groves, vineyards, nurseries, and ornamental
 - 23 Confined feeding operations
 - 24 Other agricultural land
- 3 RANGELAND**
 - 31 Herbaceous rangeland
 - 32 Shrub and brush rangeland
 - 33 Mixed rangeland
- 4 FOREST LAND**
 - 41 Deciduous forest land
 - 42 Evergreen forest land
 - 43 Mixed forest land
- 5 WATER**
 - 51 Streams and canals
 - 52 Lakes
 - 53 Reservoirs
 - 54 Bays and estuaries
- 6 WETLAND**
 - 61 Forested wetland
 - 62 Nonforested wetland
- 7 BARREN LAND**
 - 71 Dry salt flats
 - 72 Beaches
 - 73 Sandy areas other than beaches
 - 74 Bare exposed rocks
 - 75 Sparse grasses, forbs, and gravel pits
 - 76 Transitional areas
 - 77 Mixed barren land
- 8 TUNDRA**
 - 81 Shrub and brush tundra
 - 82 Bare ground tundra
 - 83 Wet tundra
 - 84 Mixed tundra
- 9 PERENNIAL SNOW OR ICE**
 - 91 Perennial snowfields
 - 92 Glaciers

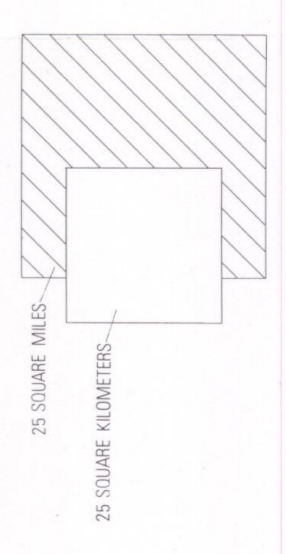
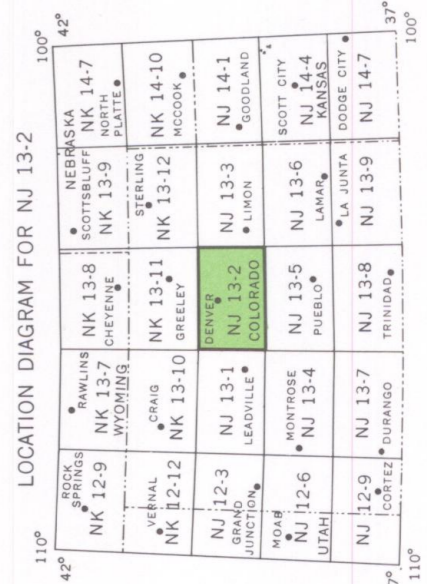
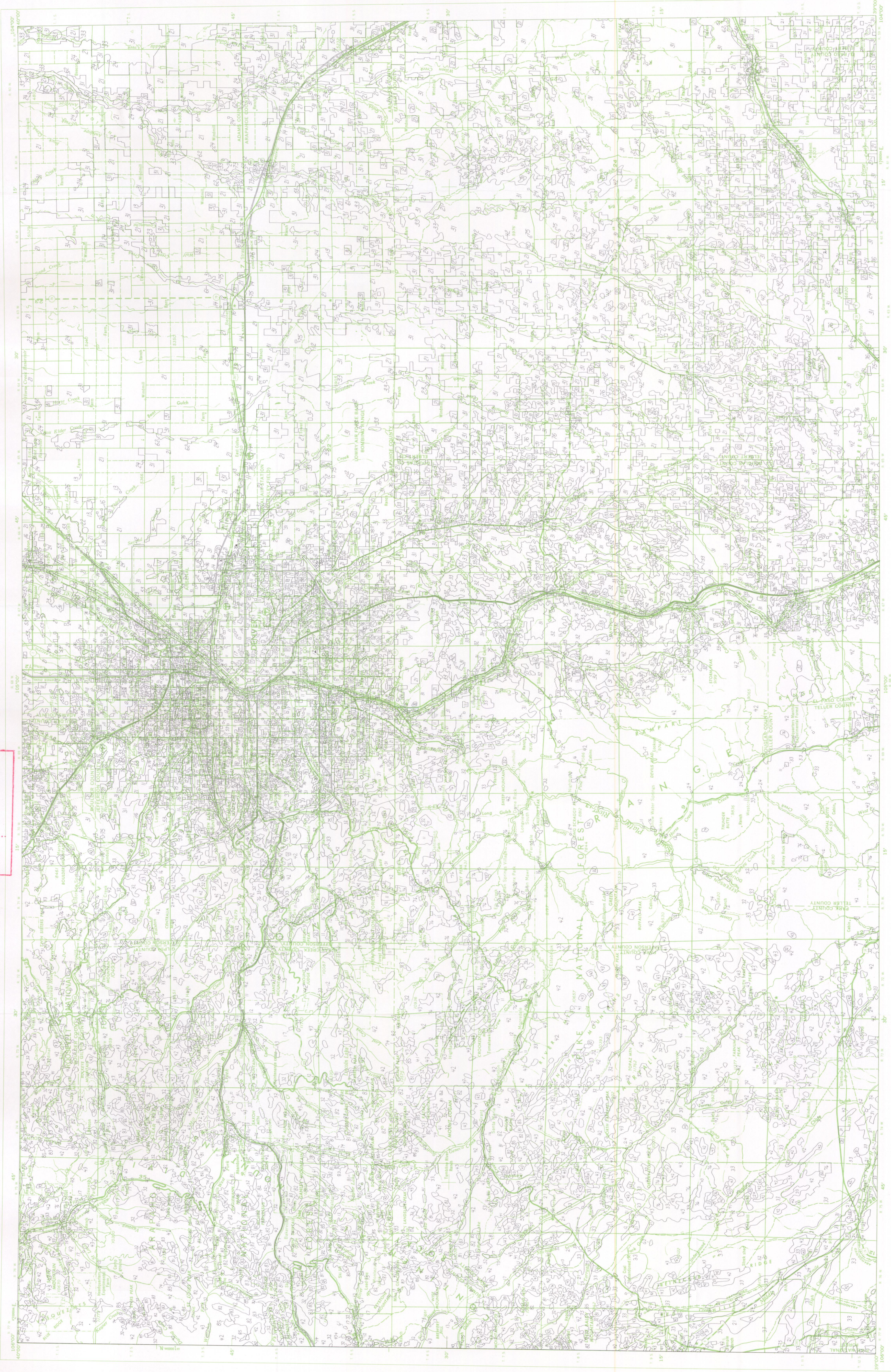
For definitions of Level I and Level II categories see U.S. Geological Survey Professional Paper 964, A land use and land cover classification system for use with remote sensing data, prepared by J. R. Jensen, E. E. Hart, J. T. Roberts, and R. E. Ulmer.

The development of a geographic information system in U.S. Geological Survey Professional Paper 1059, GISAS: A geographic information system and analysis system for use with remote sensing data, prepared by W. B. Mitchell, S. C. Campbell, R. E. Anderson, R. G. Fogar, and C. A. Hallam.

Land use and land cover information compiled from source materials dated 1975-76.

Minimum mapping units are: 4 hectares (10 acres) for Level II categories 11-17, 23-24, 31-33, 41-43, and 51-54; and 16 hectares (40 acres) for all other Level II categories.

For compilation specifications see U.S. Geological Survey Professional Paper 964, A land use and land cover classification system for use with remote sensing data, prepared by J. R. Jensen, E. E. Hart, J. T. Roberts, and R. E. Ulmer, by G. L. Loulakis, Jr.



LAND USE AND LAND COVER, 1975-76
DENVER, COLORADO