

Buit. Verenigde Staten van Amerika - Geary County Kansas

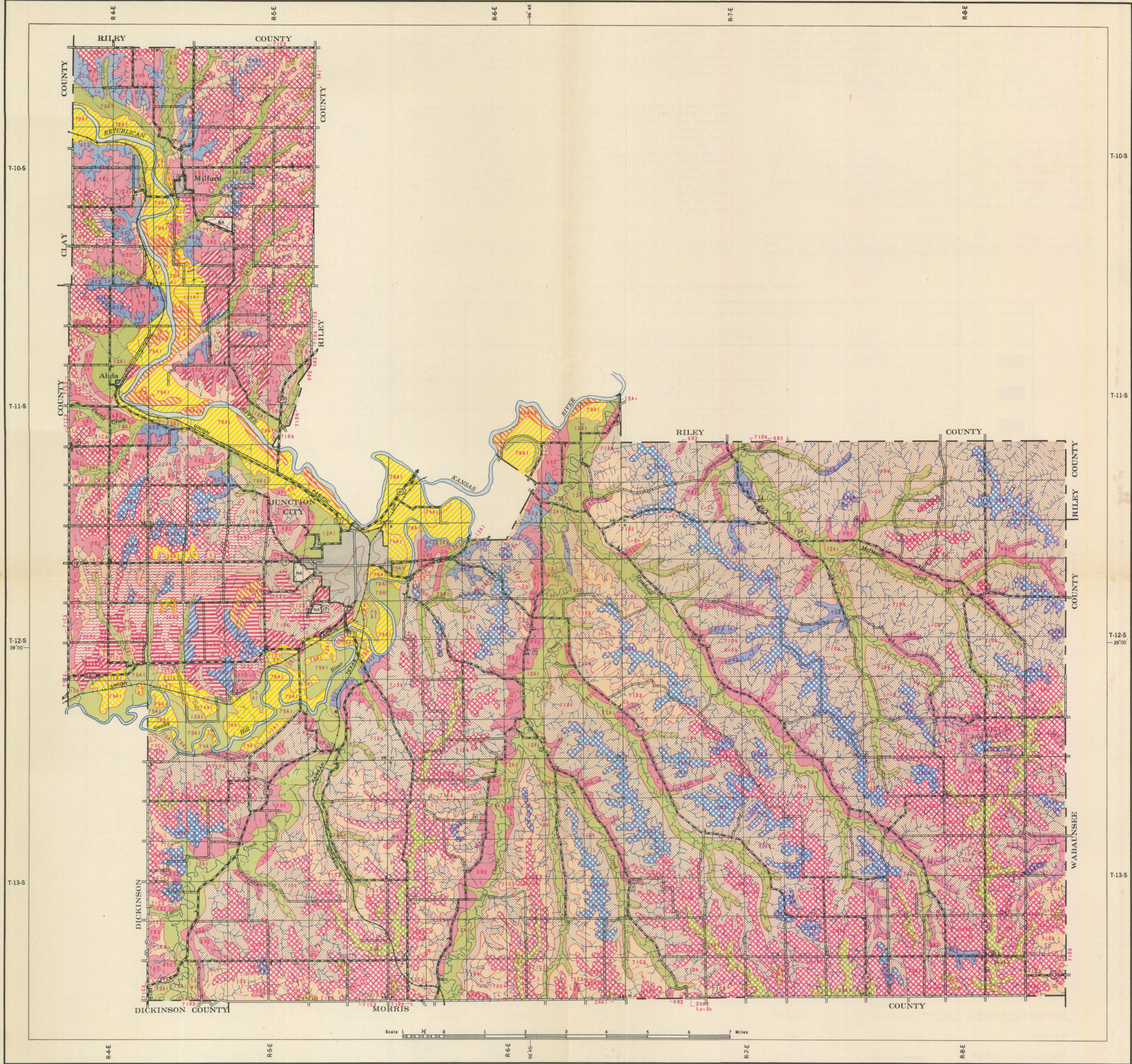
U S DEPARTMENT OF AGRICULTURE
SOIL CONSERVATION SERVICE
H. H. Bennett, Chief
NORTHERN GREAT PLAINS REGION
A. E. McClymonds, Regional Conservator

GEARY COUNTY KANSAS

RECONNAISSANCE SOIL CONSERVATION SURVEY

SHOWING GENERALIZED CLASSES OF LAND ACCORDING TO USE CAPABILITY

KANSAS AGRICULTURAL EXPERIMENT STATION
R. I. Throckmorton, Director
DEPARTMENT OF AGRONOMY
H. E. Myers, Head



Base map compiled by the Soil Conservation Service from Kansas county and transportation maps, with drainage delineated from aerial photographs. Physical Survey by the Soil Conservation Service in cooperation with the Kansas State Agricultural Experiment Station, Polyconic projection, North American, 1927, Datum indicated by marginal ticks. Sixth Principal Meridian. Horizontal control by G. L. O. Reproduced by the Soil Conservation Service. Field Survey completed January 1948.

CLASSES OF LAND ACCORDING TO USE CAPABILITY

Colors indicate classes of land according to capability for safe and continued use, based upon the physical factors mapped and the existing environment.

See back of map for: (1) Explanation of survey legend, (2) Table showing relations of physical factors and land capability classes, and (3) Legend of geographic symbols.

SUITABLE FOR CULTIVATION WITH

I No special practices

Dark, tight clay and semiclaypan soils

Friable, silty to clayey soils

II Simple practices

Dark, tight clay and semiclaypan soils

Moderately sandy soils with friable subsoils

Sandy soils

III Intensive practices

Dark, tight clay and semiclaypan soils

Moderately heavy, clayey soils

Friable, silty to clayey soils

Moderately sandy soils with friable subsoils

Sandy soils

IV Limited use and intensive practices

Dark, tight clay and semiclaypan soils

Friable, silty to clayey soils

Sandy soils

VI Moderate restrictions in use

Shallow, gravelly, or stony soils

Loose sands and sandhills

VII Severe restrictions in use

Shallow, gravelly, or stony soils

SOIL CONSERVATION SERVICE WASHINGTON D. C.

1101 AUGUST 1948

SOIL CONSERVATION SERVICE, WASHINGTON, D. C.
1101 AUGUST 1948

