

SOILS OF THE GUAYAS BASIN

ECUADOR

National Council on Planning and Economic Coordination

5 0 5 10 20 30 40 50 Km.

SCALE 1:500,000
1964

Source: Data based on aerial photographic interpretation and field checks by the Organization of American States survey team.

Compiled, drafted and published by the Department of Economic Affairs, Pan American Union, General Secretariat of the Organization of American States, Washington, D.C.

ASSOCIATION

DESCRIPTION

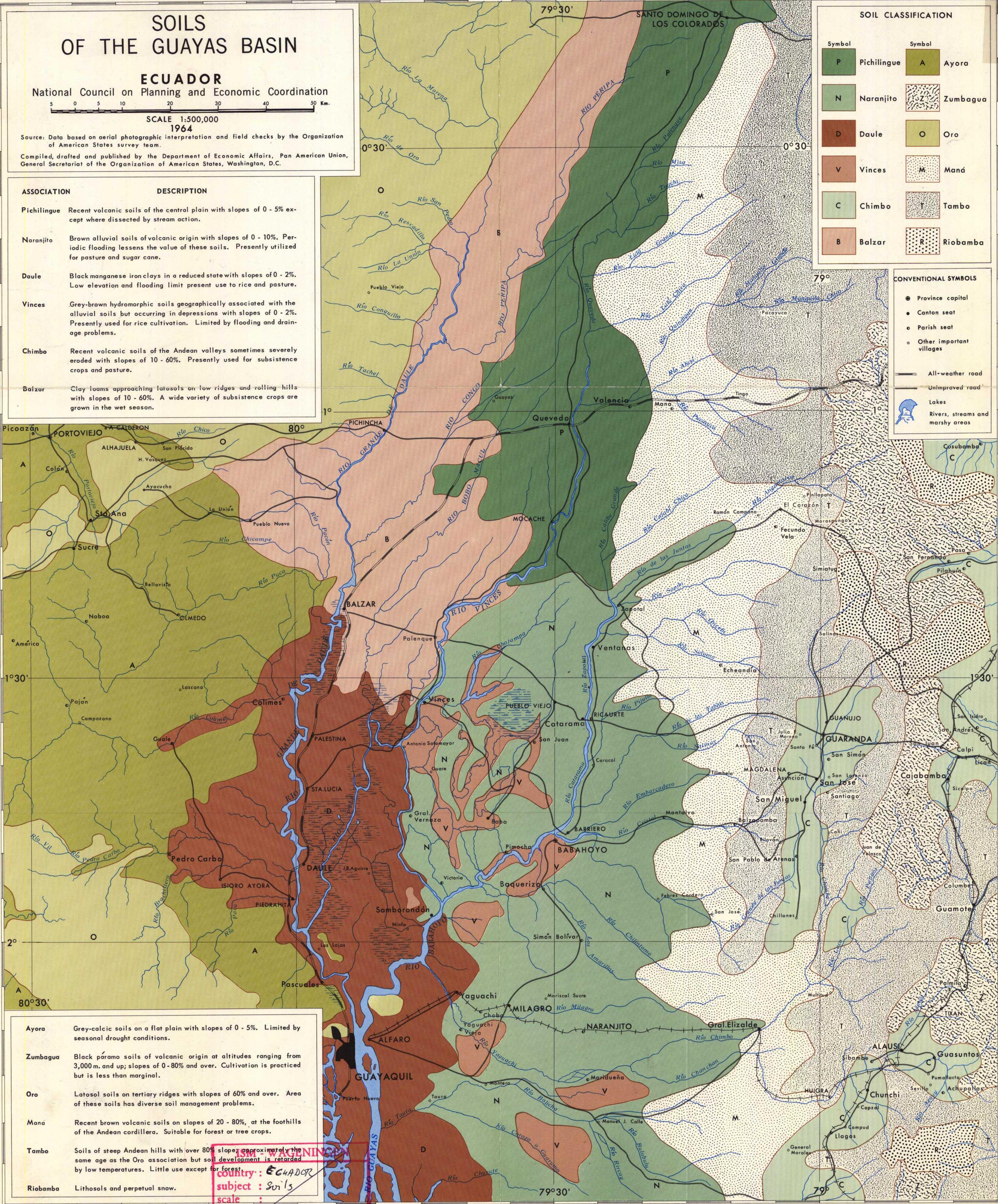
- Pichilingue** Recent volcanic soils of the central plain with slopes of 0 - 5% except where dissected by stream action.
- Naranjito** Brown alluvial soils of volcanic origin with slopes of 0 - 10%. Periodic flooding lessens the value of these soils. Presently utilized for pasture and sugar cane.
- Daule** Black manganese iron clays in a reduced state with slopes of 0 - 2%. Low elevation and flooding limit present use to rice and pasture.
- Vinces** Grey-brown hydromorphic soils geographically associated with the alluvial soils but occurring in depressions with slopes of 0 - 2%. Presently used for rice cultivation. Limited by flooding and drainage problems.
- Chimbo** Recent volcanic soils of the Andean valleys sometimes severely eroded with slopes of 10 - 60%. Presently used for subsistence crops and pasture.
- Balzar** Clay loams approaching latosols on low ridges and rolling hills with slopes of 10 - 60%. A wide variety of subsistence crops are grown in the wet season.

SOIL CLASSIFICATION

Symbol	P	Pichilingue	Symbol	A	Ayora
Symbol	N	Naranjito	Symbol	Z	Zumbagua
Symbol	D	Daule	Symbol	O	Oro
Symbol	V	Vinces	Symbol	M	Maná
Symbol	C	Chimbo	Symbol	T	Tambo
Symbol	B	Balzar	Symbol	R	Riobamba

CONVENTIONAL SYMBOLS

- Province capital
- Canton seat
- Parish seat
- Other important villages
- All-weather road
- Unimproved road
- Lakes
- Rivers, streams and marshy areas



- Ayora** Grey-calcic soils on a flat plain with slopes of 0 - 5%. Limited by seasonal drought conditions.
- Zumbagua** Black páramo soils of volcanic origin at altitudes ranging from 3,000 m. and up; slopes of 0 - 80% and over. Cultivation is practiced but is less than marginal.
- Oro** Latosol soils on tertiary ridges with slopes of 60% and over. Area of these soils has diverse soil management problems.
- Maná** Recent brown volcanic soils on slopes of 20 - 80%, at the foothills of the Andean cordillera. Suitable for forest or tree crops.
- Tambo** Soils of steep Andean hills with over 80% slopes, approximately the same age as the Oro association but soil development is retarded by low temperatures. Little use except for forest.
- Riobamba** Lithosols and perpetual snow.

country : ECUADOR
subject : Soils
scale : 1:500,000