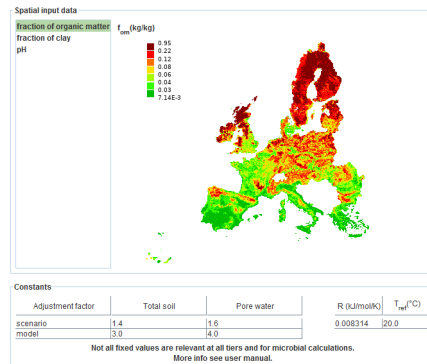
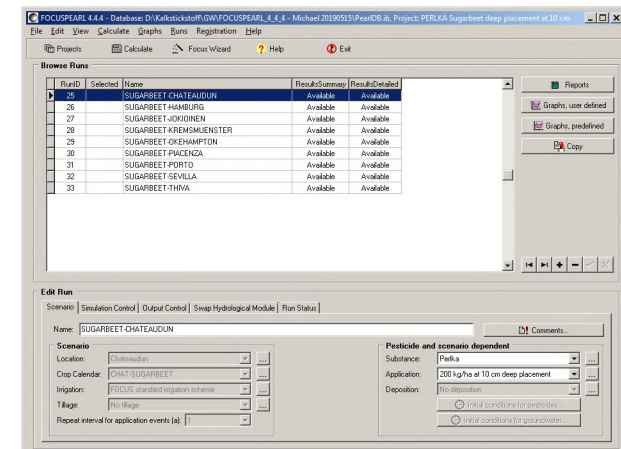
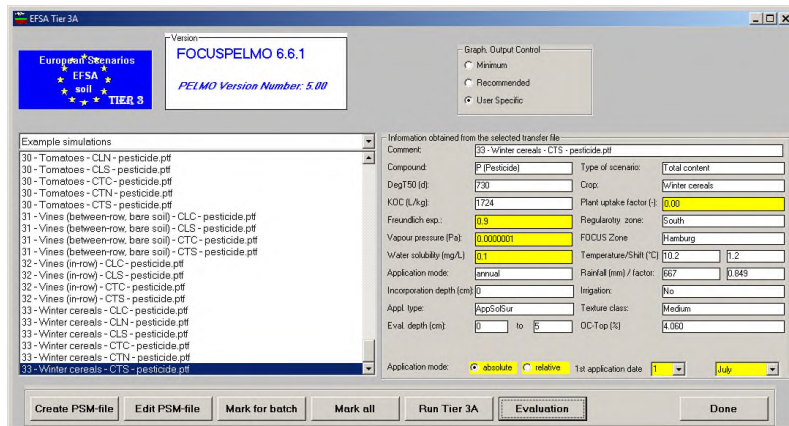


# Exposure GD under development affecting FOCUS VC

PERSAM project Test\_Met (922)



## PEC-Soil



---

# Background

---

## The PEC soil GD (2017)

- describes a new tiered approach for PECsoil
- presents new PECsoil scenarios for the European zones
- suggests a new model (PERSAM) for the initial tiers
- introduces a new sequential scheme for initial tier and higher tier modelling
- recommends PEARL and PELMO for higher tier modelling

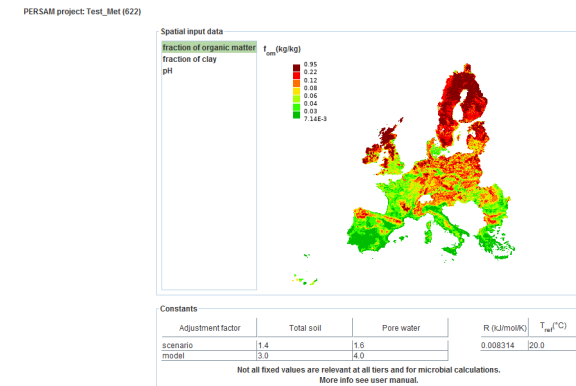
# Implications affecting the EFSA chaired Version VC:

## PERSAM

### ■ Situation:

- PERSAM is the result of EFSA activities outside FOCUS
- The tool is no FOCUS model
- PERSAM will be made available from a different site as the FOCUS models

<https://esdac.jrc.ec.europa.eu/content/european-food-safety-authority-efsa-data-persam-software-tool>



### ■ Consequences for FOCUS VC:

- FOCUS VC has no role in checking PERSAM and its scenarios (and no decision making)
- FOCUS VC has a role in checking the interface to the numerical models (implication to FOCUS models)

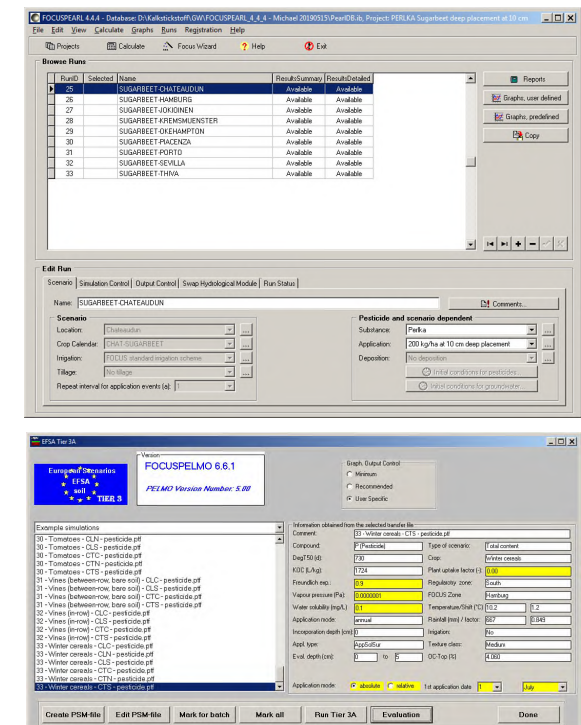
# Implications affecting the EFSA chaired Version VC:

## Numerical models PEARL and PELMO

### ■ Situation:

- Development was organised by FOCUS Working groups (DG SANTE)
- PEARL and PELMO are FOCUS models
- The models are (and will be) available from the FOCUS site as a single package (including the PEC soil scenarios)

<https://esdac.jrc.ec.europa.eu/projects/focus-dg-sante>



# Implications affecting the EFSA chaired Version VC:

## Numerical models PEARL and PELMO

### Consequences for FOCUS VC:

- FOCUS VC does the checking of the complete tool operation (groundwater and soil)
- FOCUS VC is (and will be ) responsible for the GW scenario definitions and for checking the GW scenarios
- FOCUS has no role in checking the soil scenarios in the model package (and no decision making)

